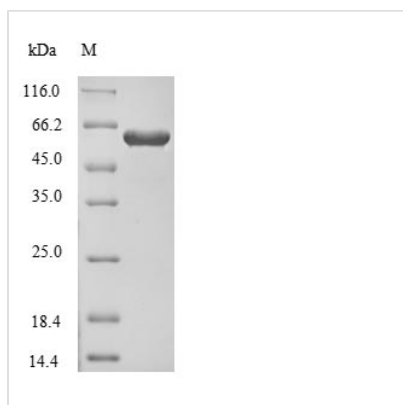




# Recombinant Human Dihydropyrimidinase-related protein 1 (CRMP1)

<b>Product Code</b>	CSB-EP623907HUe1
<b>Relevance</b>	Necessary for signaling by class 3 semaphorins and subsequent remodeling of the cytoskeleton. Plays a role in axon guidance, invasive growth and cell migration. May participate in cytokinesis.
<b>Abbreviation</b>	Recombinant Human CRMP1 protein
<b>Storage</b>	The shelf life is related to many factors, storage state, buffer ingredients, storage temperature and the stability of the protein itself. Generally, the shelf life of liquid form is 6 months at -20°C/-80°C. The shelf life of lyophilized form is 12 months at -20°C/-80°C.
<b>Uniprot No.</b>	Q14194
<b>Alias</b>	Collapsin response mediator protein 1
<b>Product Type</b>	Recombinant Protein
<b>Immunogen Species</b>	Homo sapiens (Human)
<b>Purity</b>	Greater than 90% as determined by SDS-PAGE.
<b>Sequence</b>	MSYQGKKSIPIHITS DRLLIKGGRIINDDQSLYADVYLE DGLIKQIGENLIVPGGVK TIEANGRMVIPGGIDVNTYLQKPSQGM TAADDF FQGTRAALVGGTTMIIDHVVP EPGSSLLTSFEKWHEAADTKSCCDYSLHVDITSWYDGVREELEV LVQDKGVN SFQVY MAYKDVYQMSDSQLYEFTFLKGLGAVILVHAENGDLIAQEQKRILEM GITGPEGHALSRPEELEAEAVFRAIT IAGRINCPVYITKVM SKSAADI IALARKKG PLVFGEPIAASLGT DGT HYSKNWAKAAAFVTSPPLSPDPTTPDYLT SLLACG DLQVTGSGHCPYSTAQKAVGKDNFTLIPEGVN GIEERM TVVWDKAVATGKMD ENQFVAVTSTNAAKIFNLYPRKGRIAVGSDADVVIWDPDKLKTITAKSHKSAVE YNIFEGMECHGSPLVVISQGKIVFEDGNINVNKG MGRFIPRKAFPEHLYQRVKI RNKVFG LQGVSRGMYDGPVYEV PATPKYATPAPSAKSSPSKHQPPPIRNLHQ SNFSLSGAQIDDNNPRRTGHRIVAPPGGRSNITSLG
<b>Research Area</b>	Neuroscience
<b>Source</b>	E.coli
<b>Target Names</b>	CRMP1
<b>Expression Region</b>	1-572aa
<b>Notes</b>	Repeated freezing and thawing is not recommended. Store working aliquots at 4°C for up to one week.
<b>Tag Info</b>	Tag-Free
<b>Mol. Weight</b>	62.2kDa
<b>Protein Length</b>	Full Length
<b>Image</b>	



(Tris-Glycine gel) Discontinuous SDS-PAGE (reduced) with 5% enrichment gel and 15% separation gel.

### Reconstitution

We recommend that this vial be briefly centrifuged prior to opening to bring the contents to the bottom. Please reconstitute protein in deionized sterile water to a concentration of 0.1-1.0 mg/mL. We recommend to add 5-50% of glycerol (final concentration) and aliquot for long-term storage at -20°C/-80°C. Our default final concentration of glycerol is 50%. Customers could use it as reference.

### Shelf Life

The shelf life is related to many factors, storage state, buffer ingredients, storage temperature and the stability of the protein itself. Generally, the shelf life of liquid form is 6 months at -20°C/-80°C. The shelf life of lyophilized form is 12 months at -20°C/-80°C.