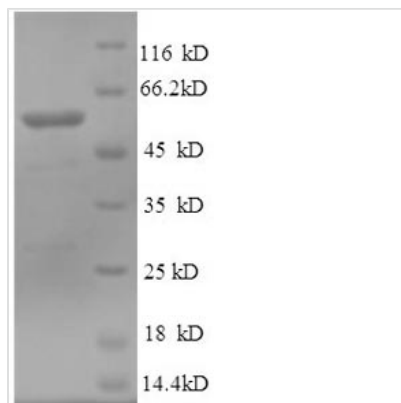




# Recombinant Human Tubulin beta-3 chain (TUBB3), partial

<b>Product Code</b>	CSB-EP623813HU1
<b>Relevance</b>	Tubulin is the major constituent of microtubules. It binds two moles of GTP, one at an exchangeable site on the beta chain and one at a non-exchangeable site on the alpha chain. TUBB3 plays a critical role in proper axon guidance and maintenance.
<b>Abbreviation</b>	Recombinant Human TUBB3 protein, partial
<b>Storage</b>	The shelf life is related to many factors, storage state, buffer ingredients, storage temperature and the stability of the protein itself. Generally, the shelf life of liquid form is 6 months at -20°C/-80°C. The shelf life of lyophilized form is 12 months at -20°C/-80°C.
<b>Uniprot No.</b>	Q13509
<b>Alias</b>	Tubulin beta-4 chain;Tubulin beta-III
<b>Product Type</b>	Recombinant Protein
<b>Immunogen Species</b>	Homo sapiens (Human)
<b>Purity</b>	Greater than 90% as determined by SDS-PAGE.
<b>Sequence</b>	MREIVHIQAGQCGNQIGAKFWEVISDEHGIDPSGNYVGDSDLQLERISVYYNE ASSHKYVPRAILVDLEPGTMDSVRSGAFGHLFRPDNFIFGQSGAGNNWAKGH YTEGAELVDSVLDVVRKECENCDCCLQGFQLTHSLGGGTGSGMGTLISKVRE EYPDRIMNTFSVVPSPKVS DTVVEPYNATLSIHLQVENTDETYCIDNEALYDI
<b>Research Area</b>	Signal Transduction
<b>Source</b>	E.coli
<b>Target Names</b>	TUBB3
<b>Expression Region</b>	1-210aa
<b>Notes</b>	Repeated freezing and thawing is not recommended. Store working aliquots at 4°C for up to one week.
<b>Tag Info</b>	N-terminal GST-tagged
<b>Mol. Weight</b>	50.1kDa
<b>Protein Length</b>	Partial
<b>Image</b>	



(Tris-Glycine gel) Discontinuous SDS-PAGE (reduced) with 5% enrichment gel and 15% separation gel.

## Description

The recombinant Human TUBB3 protein synthesis in e.coli cells necessitates the incorporation of a DNA fragment encoding the Human TUBB3 protein (1-210aa) into a plasmid vector, followed by the transformation of this vector into e.coli cells. After screening for positive cells, they are cultured and induced to express the TUBB3 protein. The protein carries a N-terminal GST tag. Cell lysis is performed to gather the recombinant Human TUBB3 protein, which undergoes affinity purification and is then analyzed using SDS-PAGE and subsequent staining of the gel with Coomassie Brilliant Blue. The purity of the resulting recombinant Human TUBB3 protein reaches up to 90%.

## Reconstitution

We recommend that this vial be briefly centrifuged prior to opening to bring the contents to the bottom. Please reconstitute protein in deionized sterile water to a concentration of 0.1-1.0 mg/mL. We recommend to add 5-50% of glycerol (final concentration) and aliquot for long-term storage at -20°C/-80°C. Our default final concentration of glycerol is 50%. Customers could use it as reference.

## Shelf Life

The shelf life is related to many factors, storage state, buffer ingredients, storage temperature and the stability of the protein itself. Generally, the shelf life of liquid form is 6 months at -20°C/-80°C. The shelf life of lyophilized form is 12 months at -20°C/-80°C.