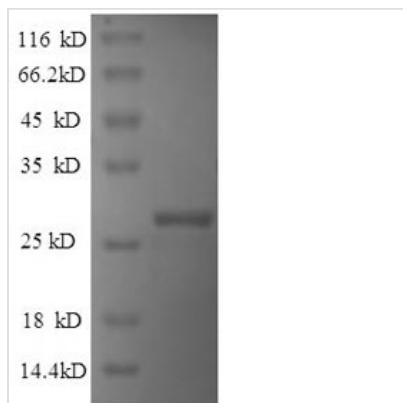


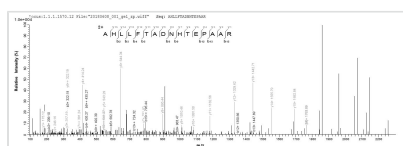


Recombinant Human Indian hedgehog protein (IHH)

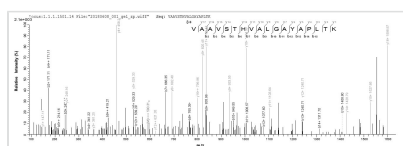
Product Code	CSB-EP622779HU
Relevance	Intercellular signal essential for a variety of patterning events during development. Binds to the patched (PTC) receptor, which functions in association with smoothened (SMO), to activate the transcription of target genes. Implicated in endochondral ossification: may regulate the balance between growth and ossification of the developing bones. Induces the expression of parathyroid hormone-related protein (PTHrP) .
Abbreviation	Recombinant Human IHH protein, partial
Storage	The shelf life is related to many factors, storage state, buffer ingredients, storage temperature and the stability of the protein itself. Generally, the shelf life of liquid form is 6 months at -20°C/-80°C. The shelf life of lyophilized form is 12 months at -20°C/-80°C.
Uniprot No.	Q14623
Alias	HHG-2
Product Type	Recombinant Protein
Immunogen Species	Homo sapiens (Human)
Purity	Greater than 90% as determined by SDS-PAGE.
Sequence	CFPAGAQVRLESGARVALSAVRPGDRVLAMGEDGSPTFSDVLIFLDREPHRL RAFQVIETQDPPRRLLALTPAHLLEFTADNHTPEAARFRATFASHVQPGQYVLVA GVPGLQPARVAAVSTHVALGAYAPLTKHGTLVVEDVVASCFAAVADHHLAQLA FWPLRLFHSLAWGSWTPGEGVHWYPQLLYRLGRLLLEEGSFHPLGMSGAGS
Research Area	Signal Transduction
Source	E.coli
Target Names	IHH
Expression Region	203-411aa
Notes	Repeated freezing and thawing is not recommended. Store working aliquots at 4°C for up to one week.
Tag Info	N-terminal 6xHis-tagged
Mol. Weight	26.6kDa
Protein Length	Full Length of Mature Protein
Image	



(Tris-Glycine gel) Discontinuous SDS-PAGE (reduced) with 5% enrichment gel and 15% separation gel.



Based on the SEQUEST from database of E.coli host and target protein, the LC-MS/MS Analysis result of CSB-EP622779HU could indicate that this peptide derived from E.coli-expressed Homo sapiens (Human) IHH.



Based on the SEQUEST from database of E.coli host and target protein, the LC-MS/MS Analysis result of CSB-EP622779HU could indicate that this peptide derived from E.coli-expressed Homo sapiens (Human) IHH.

Reconstitution

We recommend that this vial be briefly centrifuged prior to opening to bring the contents to the bottom. Please reconstitute protein in deionized sterile water to a concentration of 0.1-1.0 mg/mL. We recommend to add 5-50% of glycerol (final concentration) and aliquot for long-term storage at -20°C/-80°C. Our default final concentration of glycerol is 50%. Customers could use it as reference.

Shelf Life

The shelf life is related to many factors, storage state, buffer ingredients, storage temperature and the stability of the protein itself.

Generally, the shelf life of liquid form is 6 months at -20°C/-80°C. The shelf life of lyophilized form is 12 months at -20°C/-80°C.