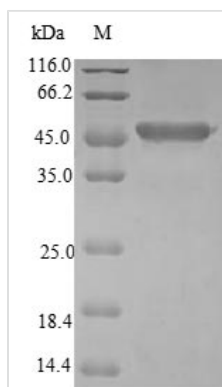




Recombinant Human Cysteine dioxygenase type 1 (CDO1)

Product Code	CSB-EP621975HU
Relevance	Initiates several important metabolic pathways related to pyruvate and several sulfurate compounds including sulfate, hypotaurine and taurine. Critical regulator of cellular cysteine concentrations. Has an important role in maintaining the hepatic concentration of intracellular free cysteine within a proper narrow range.
Abbreviation	Recombinant Human CDO1 protein
Storage	The shelf life is related to many factors, storage state, buffer ingredients, storage temperature and the stability of the protein itself. Generally, the shelf life of liquid form is 6 months at -20°C/-80°C. The shelf life of lyophilized form is 12 months at -20°C/-80°C.
Uniprot No.	Q16878
Alias	Cysteine dioxygenase type I
Product Type	Recombinant Protein
Immunogen Species	Homo sapiens (Human)
Purity	Greater than 90% as determined by SDS-PAGE.
Sequence	MEQTEVLKPRTLADLIRILHQLFAGDEVNVEEVQAIMEAYESDPTIEWAMYAKF DQYRYTRNLVDQGNGKFNLMILCWGEGHGSSIHDTNSHCFLKMLQGNNLKET LFAWPDKKSNEVMKKSERVLRENQCAIYINDSIGLHRVENISHTEPVSLHLVSP PFDTCHAFDQRTGHKNKVTMTFHSKFGIRTPNATSGSLENN
Research Area	Signal Transduction
Source	E.coli
Target Names	CDO1
Protein Names	Recommended name: Cysteine dioxygenase type 1 EC= 1.13.11.20 Alternative name(s): Cysteine dioxygenase type I Short name= CDO Short name= CDO-I
Expression Region	1-200aa
Notes	Repeated freezing and thawing is not recommended. Store working aliquots at 4°C for up to one week.
Tag Info	N-terminal GST-tagged
Mol. Weight	50.0kDa
Protein Length	Full Length
Image	



(Tris-Glycine gel) Discontinuous SDS-PAGE (reduced) with 5% enrichment gel and 15% separation gel.

Reconstitution

We recommend that this vial be briefly centrifuged prior to opening to bring the contents to the bottom. Please reconstitute protein in deionized sterile water to a concentration of 0.1-1.0 mg/mL. We recommend to add 5-50% of glycerol (final concentration) and aliquot for long-term storage at -20°C/-80°C. Our default final concentration of glycerol is 50%. Customers could use it as reference.

Shelf Life

The shelf life is related to many factors, storage state, buffer ingredients, storage temperature and the stability of the protein itself. Generally, the shelf life of liquid form is 6 months at -20°C/-80°C. The shelf life of lyophilized form is 12 months at -20°C/-80°C.