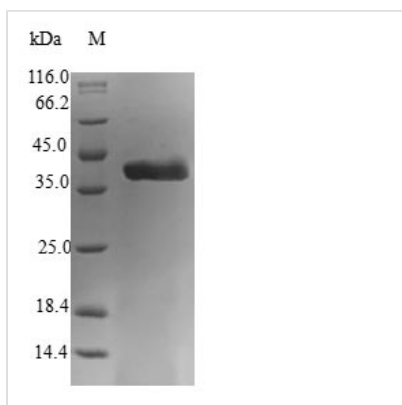




Recombinant Human Astrocytic phosphoprotein PEA-15 (PEA15)

Product Code	CSB-EP621865HU
Relevance	Blocks Ras-mediated inhibition of integrin activation and modulates the ERK MAP kinase cascade. Inhibits RPS6KA3 activities by retaining it in the cytoplasm. Inhibits both TNFRSF6- and TNFRSF1A-mediated CASP8 activity and apoptosis. Regulates glucose transport by controlling both the content of SLC2A1 glucose transporters on the plasma membrane and the insulin-dependent trafficking of SLC2A4 from the cell interior to the surface
Abbreviation	Recombinant Human PEA15 protein
Storage	The shelf life is related to many factors, storage state, buffer ingredients, storage temperature and the stability of the protein itself. Generally, the shelf life of liquid form is 6 months at -20°C/-80°C. The shelf life of lyophilized form is 12 months at -20°C/-80°C.
Uniprot No.	Q15121
Alias	15 kDa phosphoprotein enriched in astrocytes Phosphoprotein enriched in diabetes
Product Type	Recombinant Protein
Immunogen Species	Homo sapiens (Human)
Purity	Greater than 90% as determined by SDS-PAGE.
Sequence	MAEYGTLLQDLTNNITLEDLEQLKSACKEDIPSEKSEEITTGSAWFSFLESHNKL DKDNLSYIEHIFEISRRPDLLTMVVDYRTRVLKISEEDELDTKLTRIPSAKKYKDII RQPSEEEIIKLAPPPKKA
Research Area	Cell Biology
Source	E.coli
Target Names	PEA15
Protein Names	Recommended name: Astrocytic phosphoprotein PEA-15 Alternative name(s): 15 kDa phosphoprotein enriched in astrocytes Phosphoprotein enriched in diabetes Short name= PED
Expression Region	1-130aa
Notes	Repeated freezing and thawing is not recommended. Store working aliquots at 4°C for up to one week.
Tag Info	N-terminal GST-tagged
Mol. Weight	42.0kDa
Protein Length	Full Length
Image	



(Tris-Glycine gel) Discontinuous SDS-PAGE (reduced) with 5% enrichment gel and 15% separation gel.

Reconstitution

We recommend that this vial be briefly centrifuged prior to opening to bring the contents to the bottom. Please reconstitute protein in deionized sterile water to a concentration of 0.1-1.0 mg/mL. We recommend to add 5-50% of glycerol (final concentration) and aliquot for long-term storage at -20°C/-80°C. Our default final concentration of glycerol is 50%. Customers could use it as reference.

Shelf Life

The shelf life is related to many factors, storage state, buffer ingredients, storage temperature and the stability of the protein itself. Generally, the shelf life of liquid form is 6 months at -20°C/-80°C. The shelf life of lyophilized form is 12 months at -20°C/-80°C.