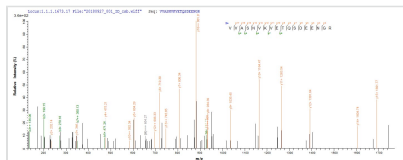


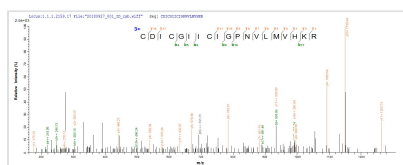
# Recombinant Human DNA-binding protein Ikaros (IKZF1)

Product Code	CSB-EP621668HU
Abbreviation	Recombinant Human IKZF1 protein
Storage	The shelf life is related to many factors, storage state, buffer ingredients, storage temperature and the stability of the protein itself. Generally, the shelf life of liquid form is 6 months at -20°C/-80°C. The shelf life of lyophilized form is 12 months at -20°C/-80°C.
Uniprot No.	Q13422
Product Type	Recombinant Protein
Immunogen Species	Homo sapiens (Human)
Purity	Greater than 85% as determined by SDS-PAGE.
Sequence	MDADEGQDMSQVSGKESPPVSDTPDEGDPEMPIPEDLSTTSGGQQSSKSDR VVASNVKVETQSDEENGRACEMNGEECAEDLRMLDASGEKMNGSHRDQGS SALSGVGGIRLPNGKCLKCDICGIICIGPNVLMVHKRSHTGERPFQCNQCGASFT QKGNLLRHIKLHSGEKPFKCHLCNYACRRRDALTGHLRTHSVIKEETNHSEMA EDLCKIGSERSLVLDRLASNVAKRKSSMPQKFLGDKGLSDTPYDSSASYEKEN EMMKSHVMDQAINNAINYLGAESLRPLVQTPPGGSEVVPVISPMYQLHKPLAE GTPRSNHSAQDSAVENTLLLLSKAKLVPSEREASPSNSCQDSTDTESNNEEQR SGLIYLTNHIAPHARNGLSLKEEHRAYDLLRAASENSQDALRVVSTSGEQMKV YKCEHCRVLFLDHVMYTIHMGCHGFRDPFECNMGYHSQDRYEFSSHITRGE HRFHMS
Research Area	Cancer
Source	E.coli
Target Names	IKZF1
Protein Names	Recommended name: DNA-binding protein IkarosAlternative name(s): Ikaros family zinc finger protein 1 Lymphoid transcription factor LyF-1
Expression Region	1-477aa
Notes	Repeated freezing and thawing is not recommended. Store working aliquots at 4°C for up to one week.
Tag Info	N-terminal 6xHis-Avi-tagged
Mol. Weight	56.8 kDa
Protein Length	Full Length of Isoform Ik7

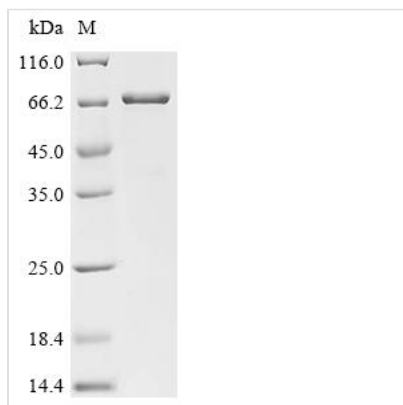
**Image**



Based on the SEQUEST from database of E.coli host and target protein, the LC-MS/MS Analysis result of CSB-EP621668HU could indicate that this peptide derived from E.coli-expressed Homo sapiens (Human) IKZF1.



Based on the SEQUEST from database of E.coli host and target protein, the LC-MS/MS Analysis result of CSB-EP621668HU could indicate that this peptide derived from E.coli-expressed Homo sapiens (Human) IKZF1.



(Tris-Glycine gel) Discontinuous SDS-PAGE (reduced) with 5% enrichment gel and 15% separation gel.

## Reconstitution

We recommend that this vial be briefly centrifuged prior to opening to bring the contents to the bottom. Please reconstitute protein in deionized sterile water to a concentration of 0.1-1.0 mg/mL. We recommend to add 5-50% of glycerol (final concentration) and aliquot for long-term storage at -20°C/-80°C. Our default final concentration of glycerol is 50%. Customers could use it as reference.

## Shelf Life

The shelf life is related to many factors, storage state, buffer ingredients, storage temperature and the stability of the protein itself. Generally, the shelf life of liquid form is 6 months at -20°C/-80°C. The shelf life of lyophilized form is 12 months at -20°C/-80°C.