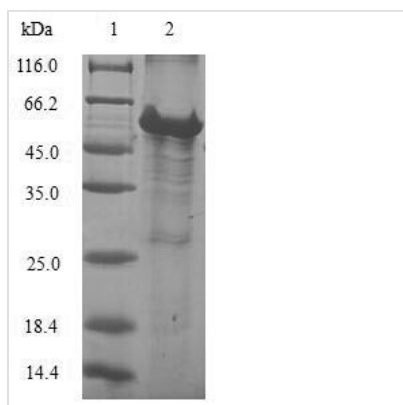




Recombinant Human 39S ribosomal protein L28, mitochondrial (MRPL28)

Product Code	CSB-EP621647HU
Abbreviation	Recombinant Human MRPL28 protein
Storage	The shelf life is related to many factors, storage state, buffer ingredients, storage temperature and the stability of the protein itself. Generally, the shelf life of liquid form is 6 months at -20°C/-80°C. The shelf life of lyophilized form is 12 months at -20°C/-80°C.
Uniprot No.	Q13084
Alias	Melanoma antigen p15 Melanoma-associated antigen recognized by T-lymphocytes
Product Type	Recombinant Protein
Immunogen Species	Homo sapiens (Human)
Purity	Greater than 90% as determined by SDS-PAGE.
Sequence	MPLHKYPVWLWKRLQLREGICSRLPGYLLRSLEEERTPTPVHYRPHGAKFKIN PKNGQRRVEDVPIPIYFPPESSQRGLWGGEWILGQIYANNDKLSKRLKKVW KPQLFEREFYSEILDKKFTVTVMRTLIDLIDEAYGLDFYILKTPKEDLCSKFGMD LKRGMILLRLARQDPQLHPEDPERRAAIYDKYKEFAIPEEEAEWVGLTLEEAIK QRLLEEKDPVPLFKIYVAELIQQQLQQQALSEPAVVQKRASGQ
Research Area	Epigenetics and Nuclear Signaling
Source	E.coli
Target Names	MRPL28
Protein Names	Recommended name: 39S ribosomal protein L28, mitochondrial Short name= L28mt Short name= MRP-L28Alternative name(s): Melanoma antigen p15 Melanoma-associated antigen recognized by T-lymphocytes
Expression Region	1-256aa
Notes	Repeated freezing and thawing is not recommended. Store working aliquots at 4°C for up to one week.
Tag Info	N-terminal GST-tagged
Mol. Weight	57.2kDa
Protein Length	Full Length of BC000990
Image	



(Tris-Glycine gel) Discontinuous SDS-PAGE (reduced) with 5% enrichment gel and 15% separation gel.

Reconstitution

We recommend that this vial be briefly centrifuged prior to opening to bring the contents to the bottom. Please reconstitute protein in deionized sterile water to a concentration of 0.1-1.0 mg/mL. We recommend to add 5-50% of glycerol (final concentration) and aliquot for long-term storage at -20°C/-80°C. Our default final concentration of glycerol is 50%. Customers could use it as reference.

Shelf Life

The shelf life is related to many factors, storage state, buffer ingredients, storage temperature and the stability of the protein itself. Generally, the shelf life of liquid form is 6 months at -20°C/-80°C. The shelf life of lyophilized form is 12 months at -20°C/-80°C.