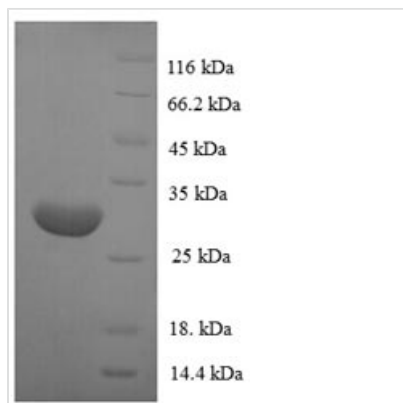




Recombinant Human POU domain class 2-associating factor 1 (POU2AF1)

Product Code	CSB-EP620973HU
Relevance	Transcriptional coactivator that specifically associates with either OCT1 or OCT2. It boosts the OCT1 mediated promoter activity and to a lesser extent, that of OCT2. It has no intrinsic DNA-binding activity. It recognizes the POU domains of OCT1 and OCT2. It is essential for the response of B-cells to antigens and required for the formation of germinal centers.
Abbreviation	Recombinant Human POU2AF1 protein
Storage	The shelf life is related to many factors, storage state, buffer ingredients, storage temperature and the stability of the protein itself. Generally, the shelf life of liquid form is 6 months at -20°C/-80°C. The shelf life of lyophilized form is 12 months at -20°C/-80°C.
Uniprot No.	Q16633
Alias	B-cell-specific coactivator OBF-1BOB-1OCA-BOCT-binding factor 1
Product Type	Recombinant Protein
Immunogen Species	Homo sapiens (Human)
Purity	Greater than 90% as determined by SDS-PAGE.
Sequence	MLWQKPTAPEQAPAPARPYQGVRVKEPVKELLRRKRGHASSGAAPAPTAVVL PHQPLATYTTVGPSCLDMEGSVSAVTEEAALCAGWLSQPTPATLQPLAPWTP YTEYVPHEAVSCPYSADMYVQPVCPSTVVGPSVLTYASPLITNVTTTRSSA TPAVGPPLEGPEHQAPLTYFPWPQPLSTLPTSTLQYQPPAPALPGPQFVQLPI SIPEPVLQDMEDPRRAASSLTIDKLLLEEEDSDAYALNHTLSVEGF
Research Area	Transcription
Source	E.coli
Target Names	POU2AF1
Expression Region	1-256aa
Notes	Repeated freezing and thawing is not recommended. Store working aliquots at 4°C for up to one week.
Tag Info	N-terminal 6xHis-tagged
Mol. Weight	31.4kDa
Protein Length	Full Length
Image	



(Tris-Glycine gel) Discontinuous SDS-PAGE (reduced) with 5% enrichment gel and 15% separation gel.

Reconstitution

We recommend that this vial be briefly centrifuged prior to opening to bring the contents to the bottom. Please reconstitute protein in deionized sterile water to a concentration of 0.1-1.0 mg/mL. We recommend to add 5-50% of glycerol (final concentration) and aliquot for long-term storage at -20°C/-80°C. Our default final concentration of glycerol is 50%. Customers could use it as reference.

Shelf Life

The shelf life is related to many factors, storage state, buffer ingredients, storage temperature and the stability of the protein itself. Generally, the shelf life of liquid form is 6 months at -20°C/-80°C. The shelf life of lyophilized form is 12 months at -20°C/-80°C.