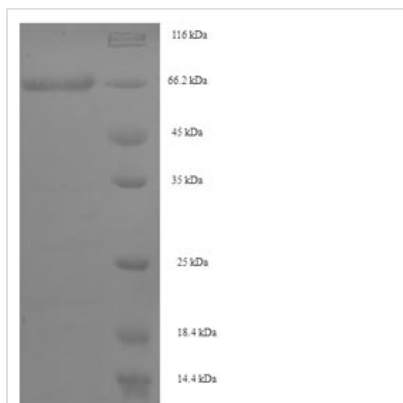


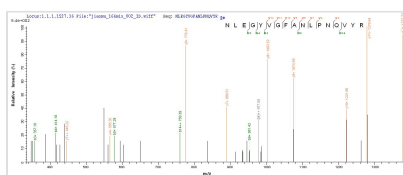


# Recombinant Human Septin-7 (SEPT7)

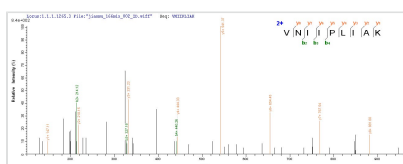
<b>Product Code</b>	CSB-EP620952HU
<b>Relevance</b>	Filament-forming cytoskeletal GTPase. Required for normal organization of the actin cytoskeleton. Required for normal progress through mitosis. Involved in cytokinesis. Required for normal association of CENPE with the kinetochore. Plays a role in ciliogenesis and collective cell movements.
<b>Abbreviation</b>	Recombinant Human SEPT7 protein
<b>Storage</b>	The shelf life is related to many factors, storage state, buffer ingredients, storage temperature and the stability of the protein itself. Generally, the shelf life of liquid form is 6 months at -20°C/-80°C. The shelf life of lyophilized form is 12 months at -20°C/-80°C.
<b>Uniprot No.</b>	Q16181
<b>Alias</b>	CDC10 protein homolog
<b>Product Type</b>	Recombinant Protein
<b>Immunogen Species</b>	Homo sapiens (Human)
<b>Purity</b>	Greater than 90% as determined by SDS-PAGE.
<b>Sequence</b>	SVSARSAAAEERSVNSSTMVAQQKNLEGYVGAFANLPNQVYRKSVKRGFEFTL MVGESGLGKSTLINSFLTDLYSPEYPGPSHRIKKTQVEQSKVLIKEGGVQL LLTIVDTPGFGDAVDNSNCWQPVIDYIDSKFEDYLNAESRVNRRQMPDNRVQ CCLYFIAPSGHGLKPLDIEFMKRLHEKVNIPLIAKADTLTPEECQQFKKQIMKEI QEHKIKIYEFPETDDEEENKLVKKIKDRLPLAVVGSNTIIEVNGKRVGRQYPW GVAEVENGEHCDFILRNMLIRTHMQDLKDVTNNVHYENYRSRKLAAVTYNGV DNNKNKGQLTKSPLAQMEEERREHVAKMKKMEMEMEQQVFEMKVKEKVQKLK DSEAELQRRHEQMKNLEAQHKELEEKRRQFEDEKANWEAQQRILEQQNSS RTLEKNKKKGKIF
<b>Research Area</b>	Cell Biology
<b>Source</b>	E.coli
<b>Target Names</b>	SEPT7
<b>Protein Names</b>	Recommended name: Septin-7 Alternative name(s): CDC10 protein homolog
<b>Expression Region</b>	2-437aa
<b>Notes</b>	Repeated freezing and thawing is not recommended. Store working aliquots at 4°C for up to one week.
<b>Tag Info</b>	N-terminal 6xHis-SUMO-tagged
<b>Mol. Weight</b>	66.5kDa
<b>Protein Length</b>	Full Length of Mature Protein
<b>Image</b>	



(Tris-Glycine gel) Discontinuous SDS-PAGE (reduced) with 5% enrichment gel and 15% separation gel.



Based on the SEQUEST from database of E.coli host and target protein, the LC-MS/MS Analysis result of CSB-EP620952HU could indicate that this peptide derived from E.coli-expressed Homo sapiens (Human) SEPT7.



Based on the SEQUEST from database of E.coli host and target protein, the LC-MS/MS Analysis result of CSB-EP620952HU could indicate that this peptide derived from E.coli-expressed Homo sapiens (Human) SEPT7.

## Reconstitution

We recommend that this vial be briefly centrifuged prior to opening to bring the contents to the bottom. Please reconstitute protein in deionized sterile water to a concentration of 0.1-1.0 mg/mL. We recommend to add 5-50% of glycerol (final concentration) and aliquot for long-term storage at -20°C/-80°C. Our default final concentration of glycerol is 50%. Customers could use it as reference.

## Shelf Life

The shelf life is related to many factors, storage state, buffer ingredients, storage temperature and the stability of the protein itself. Generally, the shelf life of liquid form is 6 months at -20°C/-80°C. The shelf life of lyophilized form is 12 months at -20°C/-80°C.