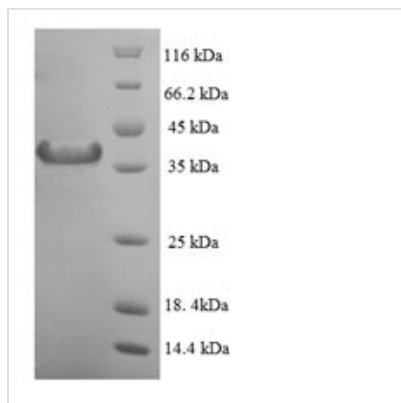




Recombinant Human Mitotic spindle assembly checkpoint protein MAD2A (MAD2L1)

Product Code	CSB-EP619756HU
Relevance	Component of the spindle-assbly checkpoint that prevents the onset of anaphase until all chromosomes are properly aligned at the metaphase plate. Required for the execution of the mitotic checkpoint which monitors the process of kinetochore-spindle attachment and inhibits the activity of the anaphase promoting complex by sequestering CDC20 until all chromosomes are aligned at the metaphase plate.
Abbreviation	Recombinant Human MAD2L1 protein
Storage	The shelf life is related to many factors, storage state, buffer ingredients, storage temperature and the stability of the protein itself. Generally, the shelf life of liquid form is 6 months at -20°C/-80°C. The shelf life of lyophilized form is 12 months at -20°C/-80°C.
Uniprot No.	Q13257
Alias	Mitotic arrest deficient 2-like protein 1 ;MAD2-like protein 1
Product Type	Recombinant Protein
Immunogen Species	Homo sapiens (Human)
Purity	Greater than 90% as determined by SDS-PAGE.
Sequence	ALQLSREQGITLRGSAEIVAEFFSFGINSILYQIRGIYPSETFTRVQKYGLTLLVTT DLELIKYLNNVVEQLKDWLYKCSVQKLVVVISNIESGEVLERWQFDIECDKTAK DDSAPREKSQKAIQDEIRSVIRQITATVTFPLLEVSCSFDLLIYTDKDLVVPEKW EESGPQFITNSEEVRLRSFTTTIHKVNSMVAYKIPVND
Research Area	Cell Biology
Source	E.coli
Target Names	MAD2L1
Expression Region	2-205aa
Notes	Repeated freezing and thawing is not recommended. Store working aliquots at 4°C for up to one week.
Tag Info	N-terminal 6xHis-SUMO-tagged
Mol. Weight	39.4kDa
Protein Length	Full Length of Mature Protein
Image	



(Tris-Glycine gel) Discontinuous SDS-PAGE (reduced) with 5% enrichment gel and 15% separation gel.

Description

Expressing the recombinant Human MAD2L1 protein generally involves constructing a plasmid encoding the Human MAD2L1 protein (2-205aa). This plasmid is introduced into e.coli cells, followed by the selection and culturing of positive e.coli cells, induction of protein expression, and subsequent cell lysis. The protein is fused with a N-terminal 6xHis-SUMO tag. The recombinant Human MAD2L1 protein is purified through affinity purification, and SDS-PAGE analysis is conducted to confirm the presence of the protein and determine its purity. This protein exhibits a purity exceeding 90%.

Reconstitution

We recommend that this vial be briefly centrifuged prior to opening to bring the contents to the bottom. Please reconstitute protein in deionized sterile water to a concentration of 0.1-1.0 mg/mL. We recommend to add 5-50% of glycerol (final concentration) and aliquot for long-term storage at -20°C/-80°C. Our default final concentration of glycerol is 50%. Customers could use it as reference.

Shelf Life

The shelf life is related to many factors, storage state, buffer ingredients, storage temperature and the stability of the protein itself. Generally, the shelf life of liquid form is 6 months at -20°C/-80°C. The shelf life of lyophilized form is 12 months at -20°C/-80°C.