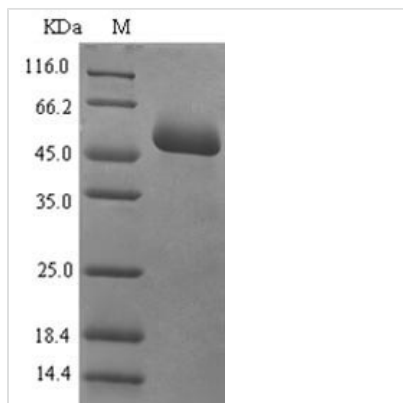


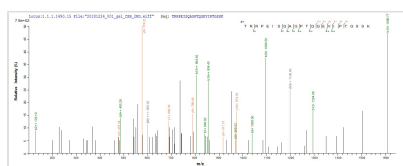


# Recombinant Human Mucosal addressin cell adhesion molecule 1 (MADCAM1), partial

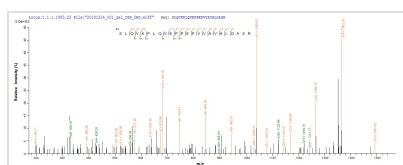
<b>Product Code</b>	CSB-EP618776HU
<b>Relevance</b>	Cell adhesion leukocyte receptor expressed by mucosal venules, helps to direct lymphocyte traffic into mucosal tissues including the Peyer patches and the intestinal lamina propria. It can bind both integrin alpha-4/beta-7 and L-selectin, regulating both the passage and retention of leukocytes. Isoform 2, lacking the mucin-like domain, may be specialized in supporting integrin alpha-4/beta-7-dependent adhesion strengthening, independent of L-selectin binding.
<b>Abbreviation</b>	Recombinant Human MADCAM1 protein, partial
<b>Storage</b>	The shelf life is related to many factors, storage state, buffer ingredients, storage temperature and the stability of the protein itself. Generally, the shelf life of liquid form is 6 months at -20°C/-80°C. The shelf life of lyophilized form is 12 months at -20°C/-80°C.
<b>Uniprot No.</b>	Q13477
<b>Alias</b>	Short name: MAdCAM-1 Short name: hMAdCAM-1
<b>Product Type</b>	Recombinant Protein
<b>Immunogen Species</b>	Homo sapiens (Human)
<b>Purity</b>	Greater than 90% as determined by SDS-PAGE.
<b>Sequence</b>	QSLQVKPLQVEPPEPVVAVALGASRQLTCRLACADRGASVQWRGLDTSLGAV QSDTGRSVLTVRNASLSAAGTRVCVGSCGGRTFQHTVQLLVYAFPDQLTVSP AALVPGDPEVACTAHKVTPVDPNALSFSLLVGGQELEGAQALGPEVQEEEE PQGDEDVLFVRTERWRLPPLGTPVPPALYCQATMRLPGLELSHRQAIPVLHSP TSPEPPDTTSPESPDTTSPESPDTTSQEPPDTTSPPEPDKTSPEPAPQQGSTH TPRSPGSTRTRRPEISQAGPTQGEVIPTGSSKPADGQ
<b>Research Area</b>	Immunology
<b>Source</b>	E.coli
<b>Target Names</b>	MADCAM1
<b>Expression Region</b>	19-317aa
<b>Notes</b>	Repeated freezing and thawing is not recommended. Store working aliquots at 4°C for up to one week.
<b>Tag Info</b>	N-terminal 6xHis-SUMO-tagged
<b>Mol. Weight</b>	47.4kDa
<b>Protein Length</b>	Extracellular Domain
<b>Image</b>	



(Tris-Glycine gel) Discontinuous SDS-PAGE (reduced) with 5% enrichment gel and 15% separation gel.



Based on the SEQUEST from database of E.coli host and target protein, the LC-MS/MS Analysis result of CSB-EP618776HU could indicate that this peptide derived from E.coli-expressed Homo sapiens (Human) MADCAM1.



Based on the SEQUEST from database of E.coli host and target protein, the LC-MS/MS Analysis result of CSB-EP618776HU could indicate that this peptide derived from E.coli-expressed Homo sapiens (Human) MADCAM1.

## Description

Expressing the recombinant Human MADCAM1 protein generally involves constructing a plasmid encoding the Human MADCAM1 protein (19-317aa). This plasmid is introduced into e.coli cells, followed by the selection and culturing of positive e.coli cells, induction of protein expression, and subsequent cell lysis. The protein is fused with a N-terminal 6xHis-SUMO tag. The recombinant Human MADCAM1 protein is purified through affinity purification, and SDS-PAGE analysis is conducted to confirm the presence of the protein and determine its purity. This protein exhibits a purity exceeding 90%.

## Reconstitution

We recommend that this vial be briefly centrifuged prior to opening to bring the contents to the bottom. Please reconstitute protein in deionized sterile water to a concentration of 0.1-1.0 mg/mL. We recommend to add 5-50% of glycerol (final concentration) and aliquot for long-term storage at -20°C/-80°C. Our default final concentration of glycerol is 50%. Customers could use it as reference.

## Shelf Life

The shelf life is related to many factors, storage state, buffer ingredients, storage temperature and the stability of the protein itself. Generally, the shelf life of liquid form is 6 months at -20°C/-80°C. The shelf life of lyophilized form is 12 months at -20°C/-80°C.