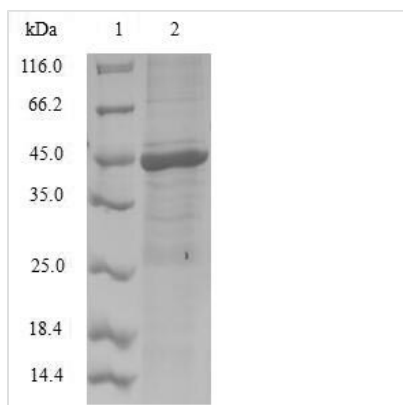




# Recombinant Human NEDD8 (NEDD8)

<b>Product Code</b>	CSB-EP618018HU
<b>Relevance</b>	Ubiquitin-like protein which plays an important role in cell cycle control and embryogenesis. Covalent attachment to its substrates requires prior activation by the E1 complex UBE1C-APPBP1 and linkage to the E2 enzyme UBE2M. Attachment of NEDD8 to cullins activates their associated E3 ubiquitin ligase activity, and thus promotes polyubiquitination and proteasomal degradation of cyclins and other regulatory proteins.
<b>Abbreviation</b>	Recombinant Human NEDD8 protein
<b>Storage</b>	The shelf life is related to many factors, storage state, buffer ingredients, storage temperature and the stability of the protein itself. Generally, the shelf life of liquid form is 6 months at -20°C/-80°C. The shelf life of lyophilized form is 12 months at -20°C/-80°C.
<b>Uniprot No.</b>	Q15843
<b>Alias</b>	Neddylin Neural precursor cell expressed developmentally down-regulated protein 8
<b>Product Type</b>	Recombinant Protein
<b>Immunogen Species</b>	Homo sapiens (Human)
<b>Purity</b>	Greater than 90% as determined by SDS-PAGE.
<b>Sequence</b>	MLIKVKTLTGKEIEIDIEPTDKVERIKERVEEKEGIPPQQQLIYSGKQMNDEKTA ADYKILGGSVLHLVLALRGGGGLRQ
<b>Research Area</b>	Cell Biology
<b>Source</b>	E.coli
<b>Target Names</b>	NEDD8
<b>Protein Names</b>	Recommended name: NEDD8 Alternative name(s): Neddylin Neural precursor cell expressed developmentally down-regulated protein 8 Short name= NEDD-8 Ubiquitin-like protein Nedd8
<b>Expression Region</b>	1-81aa
<b>Notes</b>	Repeated freezing and thawing is not recommended. Store working aliquots at 4°C for up to one week.
<b>Tag Info</b>	N-terminal GST-tagged
<b>Mol. Weight</b>	35.6kDa
<b>Protein Length</b>	Full Length
<b>Image</b>	



(Tris-Glycine gel) Discontinuous SDS-PAGE (reduced) with 5% enrichment gel and 15% separation gel.

### Reconstitution

We recommend that this vial be briefly centrifuged prior to opening to bring the contents to the bottom. Please reconstitute protein in deionized sterile water to a concentration of 0.1-1.0 mg/mL. We recommend to add 5-50% of glycerol (final concentration) and aliquot for long-term storage at -20°C/-80°C. Our default final concentration of glycerol is 50%. Customers could use it as reference.

### Shelf Life

The shelf life is related to many factors, storage state, buffer ingredients, storage temperature and the stability of the protein itself. Generally, the shelf life of liquid form is 6 months at -20°C/-80°C. The shelf life of lyophilized form is 12 months at -20°C/-80°C.