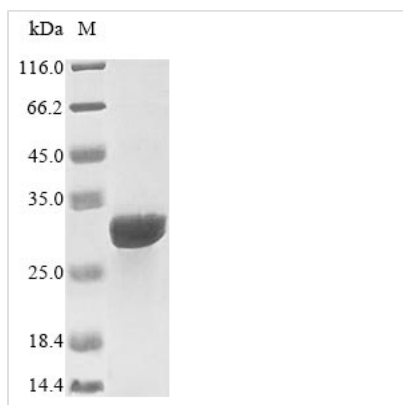


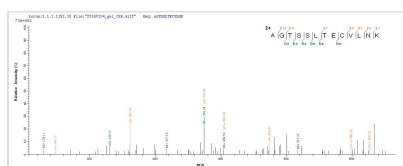


Recombinant Human Interleukin-15 receptor subunit alpha (IL15RA), partial

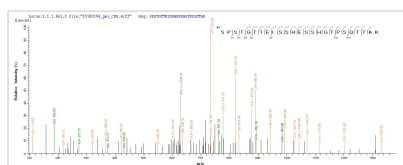
Product Code	CSB-EP614402HU
Relevance	High-affinity receptor for interleukin-15. Can signal both in cis and trans where IL15R from one subset of cells presents IL15 to neighboring IL2RG-expressing cells. Expression of different isoforms may alter or interfere with signal transduction. Isoform 5, isoform 6, isoform 7 and isoform 8 do not bind IL15. Signal transduction involves SYK.
Abbreviation	Recombinant Human IL15RA protein, partial
Storage	The shelf life is related to many factors, storage state, buffer ingredients, storage temperature and the stability of the protein itself. Generally, the shelf life of liquid form is 6 months at -20°C/-80°C. The shelf life of lyophilized form is 12 months at -20°C/-80°C.
Uniprot No.	Q13261
Product Type	Recombinant Protein
Immunogen Species	Homo sapiens (Human)
Purity	Greater than 85% as determined by SDS-PAGE.
Sequence	ITCPPPM SVEHADIWVKSYSLYSRERYICNSGFKRKAGTSSLTECVLNKATNVA HWTTPSLKCIRD PALVHQR PAPPSTVTTAGVTPQPESLSPSGKEPAASSPSSN NTAATTAAIVPGSQLMPSKSPSTGTTEISSHESSHGTSPSQTTAKNWELTASAS HQPPGVYPQGHSDTT
Research Area	Cancer
Source	E.coli
Target Names	IL15RA
Protein Names	CD_antigen: CD215
Expression Region	31-205aa
Notes	Repeated freezing and thawing is not recommended. Store working aliquots at 4°C for up to one week.
Tag Info	N-terminal 10xHis-tagged and C-terminal Myc-tagged
Mol. Weight	23.4 kDa
Protein Length	Partial
Image	



(Tris-Glycine gel) Discontinuous SDS-PAGE (reduced) with 5% enrichment gel and 15% separation gel.



Based on the SEQUEST from database of E.coli host and target protein, the LC-MS/MS Analysis result of CSB-EP614402HU could indicate that this peptide derived from E.coli-expressed Homo sapiens (Human) IL15RA.



Based on the SEQUEST from database of E.coli host and target protein, the LC-MS/MS Analysis result of CSB-EP614402HU could indicate that this peptide derived from E.coli-expressed Homo sapiens (Human) IL15RA.

Reconstitution

We recommend that this vial be briefly centrifuged prior to opening to bring the contents to the bottom. Please reconstitute protein in deionized sterile water to a concentration of 0.1-1.0 mg/mL. We recommend to add 5-50% of glycerol (final concentration) and aliquot for long-term storage at -20°C/-80°C. Our default final concentration of glycerol is 50%. Customers could use it as reference.

Shelf Life

The shelf life is related to many factors, storage state, buffer ingredients, storage temperature and the stability of the protein itself.

Generally, the shelf life of liquid form is 6 months at -20°C/-80°C. The shelf life of lyophilized form is 12 months at -20°C/-80°C.