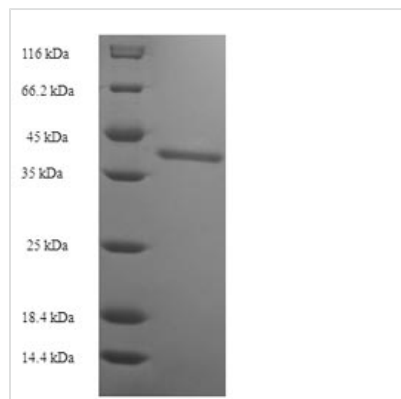




Recombinant Human Protein SSX2 (SSX2)

Product Code	CSB-EP613674HU
Relevance	Could act as a modulator of transcription.
Abbreviation	Recombinant Human SSX2 protein
Storage	The shelf life is related to many factors, storage state, buffer ingredients, storage temperature and the stability of the protein itself. Generally, the shelf life of liquid form is 6 months at -20°C/-80°C. The shelf life of lyophilized form is 12 months at -20°C/-80°C.
Uniprot No.	Q16385
Alias	Cancer/testis antigen 5.2 ;CT5.2Synovial sarcoma, X breakpoint 2Tumor antigen HOM-MEL-40
Product Type	Recombinant Protein
Immunogen Species	Homo sapiens (Human)
Purity	Greater than 90% as determined by SDS-PAGE.
Sequence	MNGDDAFARRPTVGAQIPEKIQKAFDDIAKYFSKEEWEKMKASEKIFYVYMKR KYEAMTKLGFKATLPPFMCNKRAEDFQGNLDNDPNRGNQVERPQMTFGRL QGISP KIMPKKPAEEGNDSEEVPEASGPQNDGKELCPPGKPTTSEKIHRS GP KRGEHAWTHRLRERKQLVIYEEISDPEEDDE
Research Area	Epigenetics and Nuclear Signaling
Source	E.coli
Target Names	SSX2
Expression Region	1-188aa
Notes	Repeated freezing and thawing is not recommended. Store working aliquots at 4°C for up to one week.
Tag Info	N-terminal 6xHis-SUMO-tagged
Mol. Weight	37.6kDa
Protein Length	Full Length

Image



(Tris-Glycine gel) Discontinuous SDS-PAGE (reduced) with 5% enrichment gel and 15% separation gel.



Description

The expression region of this recombinant Human SSX2 covers amino acids 1-188. The theoretical molecular weight of the SSX2 protein is 37.6 kDa. This SSX2 protein is produced using e.coli expression system. Fusion of the N-terminal 6xHis-SUMO tag into the SSX2 encoding gene fragment was conducted, allowing for easier detection and purification of the SSX2 protein in subsequent stages.

The human SSX2 protein functions in transcriptional regulation, playing a role in gene expression control. Understanding SSX2's functions enhances insights into cancer biology, gene regulation, and reproductive processes, offering potential applications in cancer diagnostics, therapy, and reproductive health research. In cancer research, SSX2 is associated with various malignancies, potentially contributing to tumor development. Its involvement in immunotherapy targets provides avenues for cancer treatment. In reproductive biology, SSX2 participates in spermatogenesis.

Reconstitution

We recommend that this vial be briefly centrifuged prior to opening to bring the contents to the bottom. Please reconstitute protein in deionized sterile water to a concentration of 0.1-1.0 mg/mL. We recommend to add 5-50% of glycerol (final concentration) and aliquot for long-term storage at -20°C/-80°C. Our default final concentration of glycerol is 50%. Customers could use it as reference.

Shelf Life

The shelf life is related to many factors, storage state, buffer ingredients, storage temperature and the stability of the protein itself.

Generally, the shelf life of liquid form is 6 months at -20°C/-80°C. The shelf life of lyophilized form is 12 months at -20°C/-80°C.