

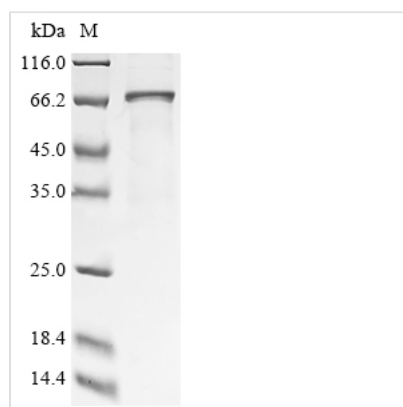


Recombinant Human Calcium/calmodulin-dependent protein kinase type II subunit delta (CAMK2D)

Product Code	CSB-EP613410HUc7
Abbreviation	Recombinant Human CAMK2D protein
Storage	The shelf life is related to many factors, storage state, buffer ingredients, storage temperature and the stability of the protein itself. Generally, the shelf life of liquid form is 6 months at -20°C/-80°C. The shelf life of lyophilized form is 12 months at -20°C/-80°C.
Uniprot No.	Q13557
Form	Liquid or Lyophilized powder
Storage Buffer	If the delivery form is liquid, the default storage buffer is Tris/PBS-based buffer, 5%-50% glycerol. If the delivery form is lyophilized powder, the buffer before lyophilization is Tris/PBS-based buffer, 6% Trehalose.
Product Type	Recombinant Human Calcium/calmodulin-dependent protein kinase type II subunit delta(CAMK2D)
Immunogen Species	Homo sapiens (Human)
Purity	Greater than 85% as determined by SDS-PAGE.
Sequence	ASTTTCTRFTDEYQLFEELGKGAFSVVRRCKIPTGQEYAAKIINTKKLSARDH QKLEREARICRLKHPNIVRLHDSISEEGFHYLVFDLVTGGELFEDIVAREYYSE ADASHCIQQILESVDNHCHLNGIVHRDLKPENLLLASKSKGA AVKLADFGLAIEVQ GDQQAWFGFAGTPGYLSPEVLRKDPYGKPVDMWACGVILYILLVGYPFFWDE DQHRLYQQIKAGAYDFPSPEWDTVTPEAKDLINKMLTINPAKRITASEALKHPW ICQRSTVASMMHRQETVDCLKKFNARRKLKGAILTTMLATRNFSAAKSLLKKP DGVKESTESSNTTIEDVDKARKQEIIKVTEQLIEAINNGDFEAYTKICDPGLTAF EPEALGNLVEGMDFHRFYFENALSKSNKPIHTIILNPHVHLVGDDAACIAYIRLT QYMDGSGMPKTMQSEETRVWHRRDGKWQNVHFHRSGSPTVPIKPPCIPNG KENFSGGTSLWQNI
Research Area	Cancer
Source	E.coli
Target Names	CAMK2D
Expression Region	2-499aa
Notes	Repeated freezing and thawing is not recommended. Store working aliquots at 4°C for up to one week.
Tag Info	C-terminal 6xHis-tagged
Mol. Weight	63.1 kDa
Protein Length	Full Length of Mature Protein



Image



(Tris-Glycine gel) Discontinuous SDS-PAGE (reduced) with 5% enrichment gel and 15% separation gel.

Description

The recombinant Human CAMK2D protein production is accomplished by manipulating the expression of the desired gene in e.coli cells. The sequence (2-499aa) of foreign DNA is incorporated into an expression vector and subsequently introduced into e.coli cells. Positive cells are selected and cultured to induce the expression of the desired protein. The protein carries a C-terminal 6xHis tag. The resulting recombinant Human CAMK2D protein undergoes affinity purification, with a purity surpassing 85%, as measured by SDS-PAGE.

Reconstitution

We recommend that this vial be briefly centrifuged prior to opening to bring the contents to the bottom. Please reconstitute protein in deionized sterile water to a concentration of 0.1-1.0 mg/mL. We recommend to add 5-50% of glycerol (final concentration) and aliquot for long-term storage at -20°C/-80°C. Our default final concentration of glycerol is 50%. Customers could use it as reference.

Shelf Life

The shelf life is related to many factors, storage state, buffer ingredients, storage temperature and the stability of the protein itself. Generally, the shelf life of liquid form is 6 months at -20°C/-80°C. The shelf life of lyophilized form is 12 months at -20°C/-80°C.