



# Recombinant Escherichia coli DNA mismatch repair protein MutL (mutL)

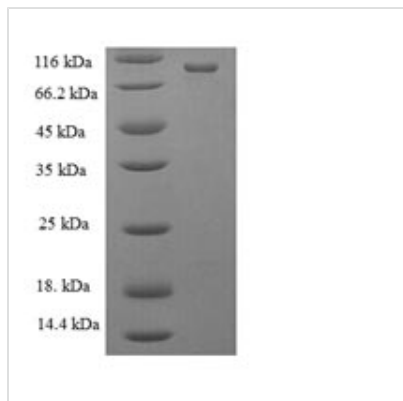
<b>Product Code</b>	CSB-EP543397ENV
<b>Relevance</b>	This protein is involved in the repair of mismatches in DNA. It is required for dam-dependent methyl-directed DNA mismatch repair. May act as a "molecular matchmaker", a protein that promotes the formation of a stable complex between two or more DNA-binding proteins in an ATP-dependent manner without itself being part of the final effector complex. The ATPase activity of MutL is stimulated by DNA.
<b>Abbreviation</b>	Recombinant E.coli mutL protein
<b>Storage</b>	The shelf life is related to many factors, storage state, buffer ingredients, storage temperature and the stability of the protein itself. Generally, the shelf life of liquid form is 6 months at -20°C/-80°C. The shelf life of lyophilized form is 12 months at -20°C/-80°C.
<b>Uniprot No.</b>	P23367
<b>Product Type</b>	Recombinant Protein
<b>Immunogen Species</b>	Escherichia coli (strain K12)
<b>Purity</b>	Greater than 90% as determined by SDS-PAGE.
<b>Sequence</b>	<p> MPIQVLPPQLANQIAAGEVVERPASVVKELVENS LDAGATRIDI DIERGGA KLIRI  RDNGCGIKKDELALALARHATSKIASLDDLEAIISLGFRGEALASISSVSRLTLTS  RTAEQQEAWQAYAEGRDMNVTVKPAAHPVGTTLEVLDFYNT PARRKFLRTE  KTEFNHIDEIIRRIALARFDVTINLSHNGKIVRQYRAVPEGGQKERRLGAICGTAF  LEQALAI EWQHGD LTLRGWVADPNHTTPALAEIQYCYVNGRMMRDRLINHAIR  QACEDKLGADQQPAFVLYLEIDPHQVDVNVHPAKHEVRFHQSRVLVHDFIYQG  VLSVLQQQLETPPLDDEPQPAPRSIPENRVAAGR NHFAEPAAREPVAPRYTP  APASGSRPAAPWPNAQPGYQKQQG EVYRQLLQTPAPMQKLK APEPQEPALA  ANSQSFG RVLTVHSDCALLERDGNISLLSLPVAERWLRQAQLTPGEAPVCAQ  PLLIPLRLKVSAAEEKSALEKAQSALAE LGIDFQSDAQHV TIRAVPLPLRQQNLQI  LIPELIGYLAKQSVFEPGNIAQWIARNLMSEHAQWSMAQAITLLADVERLC PQ  VKTPPGGLLQSVDLHPAIAKALKDE </p>
<b>Research Area</b>	Others
<b>Source</b>	E.coli
<b>Target Names</b>	mutL
<b>Expression Region</b>	1-615aa
<b>Notes</b>	Repeated freezing and thawing is not recommended. Store working aliquots at 4°C for up to one week.
<b>Tag Info</b>	N-terminal 6xHis-tagged
<b>Mol. Weight</b>	71.9kDa



## Protein Length

## Full Length

### Image



(Tris-Glycine gel) Discontinuous SDS-PAGE (reduced) with 5% enrichment gel and 15% separation gel.

## Reconstitution

We recommend that this vial be briefly centrifuged prior to opening to bring the contents to the bottom. Please reconstitute protein in deionized sterile water to a concentration of 0.1-1.0 mg/mL. We recommend to add 5-50% of glycerol (final concentration) and aliquot for long-term storage at -20°C/-80°C. Our default final concentration of glycerol is 50%. Customers could use it as reference.

## Shelf Life

The shelf life is related to many factors, storage state, buffer ingredients, storage temperature and the stability of the protein itself. Generally, the shelf life of liquid form is 6 months at -20°C/-80°C. The shelf life of lyophilized form is 12 months at -20°C/-80°C.