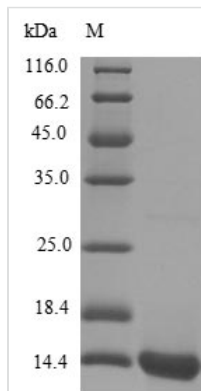




Recombinant Human Scrapie-responsive protein 1 (SCRG1)

Product Code	CSB-EP530448HUa0
Abbreviation	Recombinant Human SCRG1 protein
Storage	The shelf life is related to many factors, storage state, buffer ingredients, storage temperature and the stability of the protein itself. Generally, the shelf life of liquid form is 6 months at -20°C/-80°C. The shelf life of lyophilized form is 12 months at -20°C/-80°C.
Uniprot No.	O75711
Product Type	Recombinant Protein
Immunogen Species	Homo sapiens (Human)
Purity	Greater than 85% as determined by SDS-PAGE.
Sequence	MPANRLSCYRKILKDHNCHNLPEGVADLTQIDVNVQDHFWDGKGCEMICYCN FSELLCCPKDVFFGPKISFVIPCNNQ
Research Area	Neuroscience
Source	E.coli
Target Names	SCRG1
Protein Names	Scrapie-responsive gene 1 protein ;ScRG-1
Expression Region	21-98aa
Notes	Repeated freezing and thawing is not recommended. Store working aliquots at 4°C for up to one week.
Tag Info	N-terminal 6xHis-tagged
Mol. Weight	12.9 kDa
Protein Length	Full Length of Mature Protein

Image



(Tris-Glycine gel) Discontinuous SDS-PAGE (reduced) with 5% enrichment gel and 15% separation gel.

Description

CUSABIO used E.coli cells to express N-terminal 6xHis-SUMO-tagged human



Scrapie-responsive protein 1 (Scrg1). This recombinant Scrg1 protein is full-length of mature protein containing 21-98aa of mouse Scrg1. Its purity reached up to 90% measured by SDS-PAGE. Under reducing conditions, a molecular weight band of around 14-16 kDa was visualized on the gel. Not only being an immunogen for specific antibody production, but this recombinant Scrg1 protein may also be used in the studies of Scrg1-related signal transduction.

Scrg1 is a transcription factor that promotes chondrogenic gene expression. Human Scrg1 participates in self-renewal, migration, osteogenic differentiation, and chondrogenic differentiation of mesenchymal stem cells (MSCs) by maintaining the expression of octamer-binding transcription factor 4 (Oct-4) and CD271/low-affinity nerve growth factor receptor (LNGFR). In MSCs, Scrg1 promotes cell migration through the β 1 integrin/focal adhesion kinase (FAK) - dependent PI3K/Akt pathway. Manabu Inoue etc. Scrg1 inhibits LPS-induced chemokine CCL22 expression through the activation of the ERK1/2 signaling pathway in mouse macrophage Raw264.7 cells.

Reconstitution

We recommend that this vial be briefly centrifuged prior to opening to bring the contents to the bottom. Please reconstitute protein in deionized sterile water to a concentration of 0.1-1.0 mg/mL. We recommend to add 5-50% of glycerol (final concentration) and aliquot for long-term storage at -20°C/-80°C. Our default final concentration of glycerol is 50%. Customers could use it as reference.

Shelf Life

The shelf life is related to many factors, storage state, buffer ingredients, storage temperature and the stability of the protein itself. Generally, the shelf life of liquid form is 6 months at -20°C/-80°C. The shelf life of lyophilized form is 12 months at -20°C/-80°C.