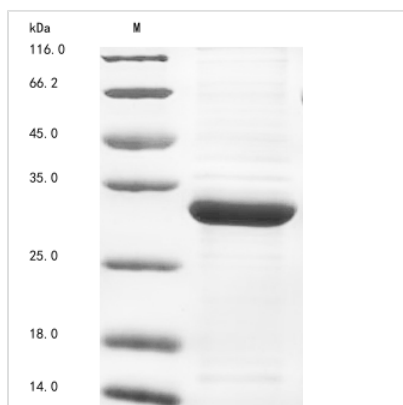




# Recombinant Tobacco mosaic virus Replicase large subunit, partial

<b>Product Code</b>	CSB-EP529603TOP
<b>Abbreviation</b>	Recombinant Tobacco mosaic virus Replicase large subunit protein, partial
<b>Storage</b>	The shelf life is related to many factors, storage state, buffer ingredients, storage temperature and the stability of the protein itself. Generally, the shelf life of liquid form is 6 months at -20°C/-80°C. The shelf life of lyophilized form is 12 months at -20°C/-80°C.
<b>Uniprot No.</b>	O93058
<b>Storage Buffer</b>	Tris-based buffer, 50% glycerol
<b>Product Type</b>	Recombinant Proteins
<b>Immunogen Species</b>	Tobacco mosaic virus (strain OM) (TMV)
<b>Purity</b>	Greater than 85% as determined by SDS-PAGE.
<b>Sequence</b>	VLVDGVPGCGKTKELSRVNFDEDLILVPGKQAAEMIRRRANSSGIIIVATKDNV KTVDSEFMMNFGKSTRCQFKRLFIDEGLMLHTGCVNFLVAMSLCEIAYVYGDTQ QIPYINRVSGFPYPAHFAKLEVDEVETRRTTLRCPADVTHYLNRRYEGFVMST SSVKKSVSQEMVGGA VINPISKPLHGKILTFTQSDKEALLSRGYSDVHTVHEV QGETYSDVSLVRLTPVPSIIAGDSPHVLVALSRHTCSLKYYT
<b>Research Area</b>	Others
<b>Source</b>	E.coli
<b>Target Names</b>	N/A
<b>Protein Names</b>	Recommended name: Replicase large subunit EC= 2.1.1.- EC= 2.7.7.- EC= 2.7.7.48 EC= 3.6.4.13 Alternative name(s): 183 kDa protein RNA-directed RNA polymerase Cleaved into the following chain: 1. Replicase small s
<b>Expression Region</b>	829-1085aa
<b>Notes</b>	Repeated freezing and thawing is not recommended. Store working aliquots at 4°C for up to one week.
<b>Tag Info</b>	N-terminal 6xHis-tagged
<b>Mol. Weight</b>	32.6 kDa
<b>Protein Length</b>	Partial
<b>Image</b>	



(Tris-Glycine gel) Discontinuous SDS-PAGE (reduced) with 5% enrichment gel and 15% separation gel.

## Shelf Life

The shelf life is related to many factors, storage state, buffer ingredients, storage temperature and the stability of the protein itself. Generally, the shelf life of liquid form is 6 months at -20°C/-80°C. The shelf life of lyophilized form is 12 months at -20°C/-80°C.