



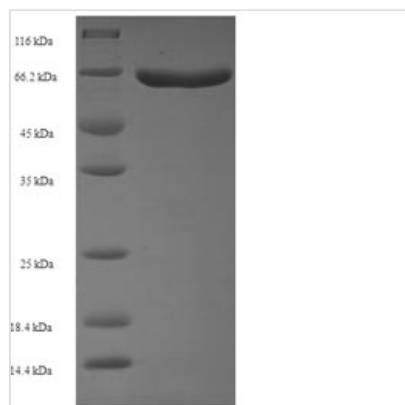
Recombinant Schizosaccharomyces pombe

Sulfide:quinone oxidoreductase, mitochondrial (hmt2)

Product Code	CSB-EP526087SXV
Relevance	Catalyzes the oxidation of hydrogen sulfide, with the help of a quinone.
Abbreviation	Recombinant SchizosaccharoMyces pombe hmt2 protein
Storage	The shelf life is related to many factors, storage state, buffer ingredients, storage temperature and the stability of the protein itself. Generally, the shelf life of liquid form is 6 months at -20°C/-80°C. The shelf life of lyophilized form is 12 months at -20°C/-80°C.
Uniprot No.	O94284
Alias	Cadmium resistance protein 1Heavy metal tolerance protein 2
Product Type	Recombinant Protein
Immunogen Species	Schizosaccharomyces pombe (strain 972 / ATCC 24843) (Fission yeast)
Purity	Greater than 90% as determined by SDS-PAGE.
Sequence	ASTHHKVLVVGGGSAGISVAHQIYNKFSKYRFANDQGKDTSLKPGEIGIVDGA KYHYYQPGWTLTGAGLSSVAKTRRELASLVPADKFKLHPEFVKSLHPRENKIV TQSGQEISYDYLMAAGIYTDFGRIKGLTEALDDPNTPVVTIYSEKYADAVYPWI EKTKSGNAIFTQPSGVLKCAGAPQKIMWMAEDYWRRHKVRSNIDVSFYTGMP TLFSVKRYSDALLRQNEQLHRNVKINYKDELVEVKGSERKAVFKNLNDGSLFE RPFDLLHAVPSMRSHEFIAKSDLADKSGFVAVDQSTTQSTKFPNVFAIGDCSG LPTSKTYAAITAQAPVMVHNLWSFVNGKNLTASYNGYTSCPLLTYGYGKLILAEF LYKQEPKESFGRFSRFLDQTVPRRMFYHLKKDFFPFVYWNFAVRNGKWKYGS RGLIPPHFPVN
Research Area	Others
Source	E.coli
Target Names	hmt2
Protein Names	Recommended name: Sulfide:quinone oxidoreductase, mitochondrial EC= 1.-.-. Alternative name(s): Cadmium resistance protein 1 Heavy metal tolerance protein 2
Expression Region	25-459aa
Notes	Repeated freezing and thawing is not recommended. Store working aliquots at 4°C for up to one week.
Tag Info	N-terminal 6xHis-SUMO-tagged
Mol. Weight	65.0kDa
Protein Length	Full Length of Mature Protein



Image



(Tris-Glycine gel) Discontinuous SDS-PAGE (reduced) with 5% enrichment gel and 15% separation gel.

Reconstitution

We recommend that this vial be briefly centrifuged prior to opening to bring the contents to the bottom. Please reconstitute protein in deionized sterile water to a concentration of 0.1-1.0 mg/mL. We recommend to add 5-50% of glycerol (final concentration) and aliquot for long-term storage at -20°C/-80°C. Our default final concentration of glycerol is 50%. Customers could use it as reference.

Shelf Life

The shelf life is related to many factors, storage state, buffer ingredients, storage temperature and the stability of the protein itself. Generally, the shelf life of liquid form is 6 months at -20°C/-80°C. The shelf life of lyophilized form is 12 months at -20°C/-80°C.