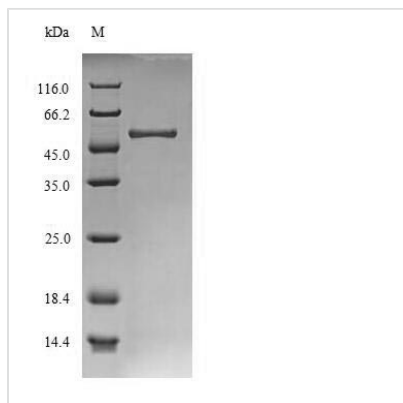




# Recombinant Schizosaccharomyces pombe

## Glucan endo-1,3-alpha-glucosidase agn1 (agn1)

<b>Product Code</b>	CSB-EP522580SXVb1
<b>Relevance</b>	Has a role in cell separation where it is required for the degradation of the cell wall material surrounding the septum (the septum edging) which must be hydrolyzed before full separation of the daughter cells can occur. Hydrolyzes 1,3-alpha-glucan predominantly into pentasaccharides.
<b>Abbreviation</b>	Recombinant SchizosaccharoMyces pombe agn1 protein
<b>Storage</b>	The shelf life is related to many factors, storage state, buffer ingredients, storage temperature and the stability of the protein itself. Generally, the shelf life of liquid form is 6 months at -20°C/-80°C. The shelf life of lyophilized form is 12 months at -20°C/-80°C.
<b>Uniprot No.</b>	O13716
<b>Product Type</b>	Recombinant Protein
<b>Immunogen Species</b>	Schizosaccharomyces pombe (strain 972 / ATCC 24843) (Fission yeast)
<b>Purity</b>	Greater than 85% as determined by SDS-PAGE.
<b>Sequence</b>	DKMVVAHFIVGNTYPYTVSNWEEDIQDAIAVGIDGFALNMGSDAWQVERIEDA YDAAASVSSDFKLFISFDMSIISADADFIEGVVRRFADKPNQLYYDGKVFVSTFA GETDTFGYSDVSTGWDSAVKEPLASAGYPIYFVPSWTSLGQGALEESVADGF LSWNAWPTTDADMNDNDIGYQNLANS LGKLYVAPVSPWFYTHLSYKNWAY KSDWLIIDRWNEMLSVQPDMIEVLTWNDYGESHYIGNIQGALPAGSEGYVDGF DHTAWRYLMSPYISAYKLGLSEPYINFESLFYWYRPTPKSATATADSLSPSG GDYMEDEIFVLVYLLQSAEVTVTCGSTTQTFSGVPGVNQFTIPMETNASPSFT VARQGGTLASGTGPEIVDSL SIYNFNAYTGVL YF
<b>Research Area</b>	others
<b>Source</b>	E.coli
<b>Target Names</b>	agn1
<b>Protein Names</b>	Endo-1,3-alpha-glucanase agn1
<b>Expression Region</b>	21-424aa
<b>Notes</b>	Repeated freezing and thawing is not recommended. Store working aliquots at 4°C for up to one week.
<b>Tag Info</b>	N-terminal 10xHis-tagged and C-terminal Myc-tagged
<b>Mol. Weight</b>	51.8 kDa
<b>Protein Length</b>	Full Length of Mature Protein
<b>Image</b>	



(Tris-Glycine gel) Discontinuous SDS-PAGE (reduced) with 5% enrichment gel and 15% separation gel.

### Reconstitution

We recommend that this vial be briefly centrifuged prior to opening to bring the contents to the bottom. Please reconstitute protein in deionized sterile water to a concentration of 0.1-1.0 mg/mL. We recommend to add 5-50% of glycerol (final concentration) and aliquot for long-term storage at -20°C/-80°C. Our default final concentration of glycerol is 50%. Customers could use it as reference.

### Shelf Life

The shelf life is related to many factors, storage state, buffer ingredients, storage temperature and the stability of the protein itself. Generally, the shelf life of liquid form is 6 months at -20°C/-80°C. The shelf life of lyophilized form is 12 months at -20°C/-80°C.