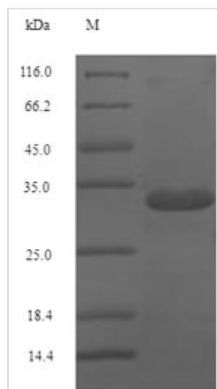




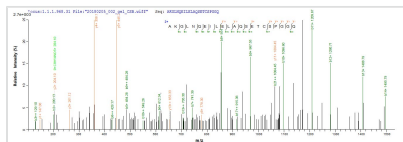
Recombinant Dog Major allergen Can f 1

Product Code	CSB-EP519455DO
Abbreviation	Recombinant Dog Major allergen Can f 1 protein
Storage	The shelf life is related to many factors, storage state, buffer ingredients, storage temperature and the stability of the protein itself. Generally, the shelf life of liquid form is 6 months at -20°C/-80°C. The shelf life of lyophilized form is 12 months at -20°C/-80°C.
Uniprot No.	O18873
Alias	Allergen Dog 1 Allergen: Can f 1
Product Type	Recombinant Protein
Immunogen Species	Canis lupus familiaris (Dog) (Canis familiaris)
Purity	Greater than 90% as determined by SDS-PAGE.
Sequence	QDTPALGKDTVAVSGKWYLKAMTADQEVPEKPDSVTPMILKAQKGGNLEAKIT MLTNGQCQNITVVLHKTSEPGKYTAYEGQRRVFIQPSVPRDHYILYCEGELHG RQIRMAKLLGRDPEQSQEALDFREFSRAKGLNQEILELAQSETCSPGGQ
Research Area	Others
Source	E.coli
Protein Names	Recommended name: Major allergen Can f 1 Alternative name(s): Allergen Dog 1 Allergen= Can f 1
Expression Region	19-174aa
Notes	Repeated freezing and thawing is not recommended. Store working aliquots at 4°C for up to one week.
Tag Info	N-terminal 6xHis-SUMO-tagged
Mol. Weight	33.3kDa
Protein Length	Full Length of Mature Protein

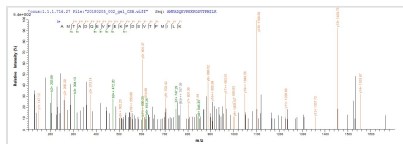
Image



(Tris-Glycine gel) Discontinuous SDS-PAGE (reduced) with 5% enrichment gel and 15% separation gel.



Based on the SEQUEST from database of E.coli host and target protein, the LC-MS/MS Analysis result of CSB-EP519455DO could indicate that this peptide derived from E.coli-expressed Canis familiaris (Dog) (Canis lupus familiaris) N/A.



Based on the SEQUEST from database of E.coli host and target protein, the LC-MS/MS Analysis result of CSB-EP519455DO could indicate that this peptide derived from E.coli-expressed Canis familiaris (Dog) (Canis lupus familiaris) N/A.

Reconstitution

We recommend that this vial be briefly centrifuged prior to opening to bring the contents to the bottom. Please reconstitute protein in deionized sterile water to a concentration of 0.1-1.0 mg/mL. We recommend to add 5-50% of glycerol (final concentration) and aliquot for long-term storage at -20°C/-80°C. Our default final concentration of glycerol is 50%. Customers could use it as reference.

Shelf Life

The shelf life is related to many factors, storage state, buffer ingredients, storage temperature and the stability of the protein itself. Generally, the shelf life of liquid form is 6 months at -20°C/-80°C. The shelf life of lyophilized form is 12 months at -20°C/-80°C.