



Recombinant Shigella flexneri serotype X E3 ubiquitin-protein ligase ipaH9.8 (ipaH9.8)

Product Code	CSB-EP513237SZC
Relevance	Effector proteins function to alter host cell physiology and promote bacterial survival in host tissues. This protein is an E3 ubiquitin ligase that interferes with host's ubiquitination pathway and modulates the acute inflammatory responses, thus facilitating bacterial colonization within the host cell. Interacts with IKBKG (NO) and TNIP1 (ABIN-1), a ubiquitin-binding adapter protein, which results in TNIP1-dependent 'Lys-27'-linked polyubiquitination of IKBKG. Consequently, polyubiquitinated IKBKG undergoes proteasome-dependent degradation, which perturbs NF-kappa-B activation during bacterial infection. Uses UBE2D2 (UBCH5B) as an E2 ubiquitin-conjugating enzyme. Mediates polyubiquitination of host U2AF1, leading to its proteasomal degradation.
Abbreviation	Recombinant Shigella flexneri serotype X ipaH9.8 protein
Storage	The shelf life is related to many factors, storage state, buffer ingredients, storage temperature and the stability of the protein itself. Generally, the shelf life of liquid form is 6 months at -20°C/-80°C. The shelf life of lyophilized form is 12 months at -20°C/-80°C.
Uniprot No.	D2AJU0
Alias	Invasion plasmid antigen ipaH9.8
Product Type	Recombinant Protein
Immunogen Species	Shigella flexneri serotype X (strain 2002017)
Purity	Greater than 90% as determined by SDS-PAGE.
Sequence	MLPINNNFSLPQNSFYNTISGTYADYFSAWDKWEKQALPGEERDEAVSRLKE CLINNSDELRLDRLNLSSLPDNLPAQITLLNVSYNQLTNLPELPVTLKKLYSASN KLSELPVLPPALESQVQHNELENLPALPDSLLTMNISYNEIVSLPSLPQALKNL RATRNLFTELPAFSEGNNPVVREYFFDRNQISHIPESILNLRNECSIHISDNPLS SHALQALQRLTSSPDYHGPRIFYSMSDGQQTLLHRPLADAVTAWFPENKQSD VSQIWHAFEHEEHANTFSAFLDRLSDTVSARNTSGFREQVAAWLEKLSASAEL RQQSFAVAADATESCEDRVALTWNNLRKTLLVHQASEGLFDNDTGALLSLGR EMFRLEILEDIARDKVRTLHFVDEIEVYLAFTMLAEKQLSTAVKEMRFYGV GVTANDLRTAEAMVRSRENEFTDWFSLWGPWHAVLKRTEADRWAQAEQ KYEMLENEYPPQRVADRLKASGLSGDADAEREAGAQMRETEQQIYRQLTDEV LALRLSENGSQLHHS
Research Area	Others
Source	E.coli
Target Names	ipaH9.8
Expression Region	1-545aa
Notes	Repeated freezing and thawing is not recommended. Store working aliquots at



4°C for up to one week.

Tag Info

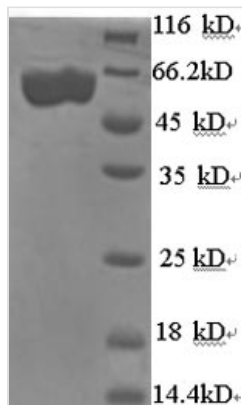
N-terminal 6xHis-tagged

Mol. Weight

66.0kDa

Protein Length

Full Length

Image


(Tris-Glycine gel) Discontinuous SDS-PAGE (reduced) with 5% enrichment gel and 15% separation gel.

Reconstitution

We recommend that this vial be briefly centrifuged prior to opening to bring the contents to the bottom. Please reconstitute protein in deionized sterile water to a concentration of 0.1-1.0 mg/mL. We recommend to add 5-50% of glycerol (final concentration) and aliquot for long-term storage at -20°C/-80°C. Our default final concentration of glycerol is 50%. Customers could use it as reference.

Shelf Life

The shelf life is related to many factors, storage state, buffer ingredients, storage temperature and the stability of the protein itself. Generally, the shelf life of liquid form is 6 months at -20°C/-80°C. The shelf life of lyophilized form is 12 months at -20°C/-80°C.