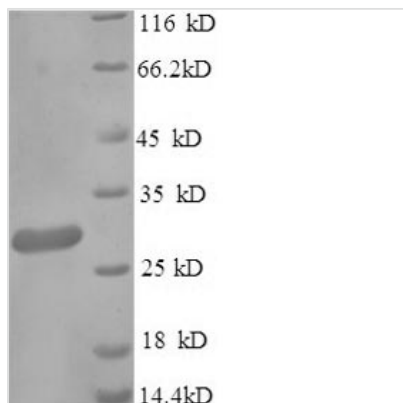


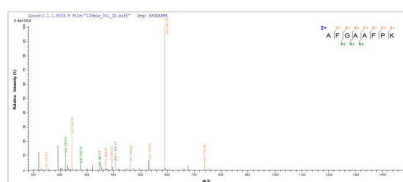


# Recombinant *Klebsiella pneumoniae* Metallo-beta-lactamase type 2 (blaNDM-1)

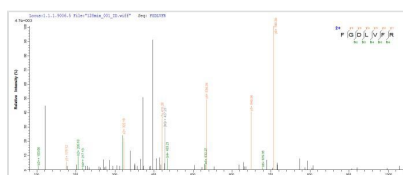
Product Code	CSB-EP510513KBG
Relevance	Confers resistance to many beta-lactam antibiotics, including some carbapens. Does not confer resistance to the polymixin colistin or the fluoroquinolone ciprofloxacin.
Abbreviation	Recombinant <i>Klebsiella pneumoniae</i> blaNDM-1 protein
Storage	The shelf life is related to many factors, storage state, buffer ingredients, storage temperature and the stability of the protein itself. Generally, the shelf life of liquid form is 6 months at -20°C/-80°C. The shelf life of lyophilized form is 12 months at -20°C/-80°C.
Uniprot No.	C7C422
Product Type	Recombinant Proteins
Immunogen Species	<i>Klebsiella pneumoniae</i>
Purity	Greater than 90% as determined by SDS-PAGE.
Sequence	GEIRPTIGQQMETGDQRFGLVFRQLAPNVWQHTSYLDMPGFGAVASNGLIV RDGGRVLVVDTAWTDDQTAQILNWIQKEINLPVALAVVTHAHQDKMGGMDAL HAAGIATYANALSNQLAPQEGMVAAQHSLTFAANGWVEPATAPNFGPLKVIFY PGPGHTSDNITVGIDGTDAIFGGCLIKDSKAKSLGNLGDADTEHYAASARAFGA AFPKASMIVMSHSAPDSRAAITHTARMADKLR
Source	E.coli
Target Names	blaNDM-1
Expression Region	29-270aa
Notes	Repeated freezing and thawing is not recommended. Store working aliquots at 4°C for up to one week.
Tag Info	N-terminal 6xHis-SUMO-tagged
Mol. Weight	38.6 kDa
Protein Length	Full Length of Mature Protein
Image	



(Tris-Glycine gel) Discontinuous SDS-PAGE (reduced) with 5% enrichment gel and 15% separation gel.



Based on the SEQUEST from database of E.coli host and target protein, the LC-MS/MS Analysis result of CSB-EP510513KBG could indicate that this peptide derived from E.coli-expressed *Klebsiella pneumoniae* blaNDM-1.



Based on the SEQUEST from database of E.coli host and target protein, the LC-MS/MS Analysis result of CSB-EP510513KBG could indicate that this peptide derived from E.coli-expressed *Klebsiella pneumoniae* blaNDM-1.

## Shelf Life

The shelf life is related to many factors, storage state, buffer ingredients, storage temperature and the stability of the protein itself.

Generally, the shelf life of liquid form is 6 months at -20°C/-80°C. The shelf life of lyophilized form is 12 months at -20°C/-80°C.