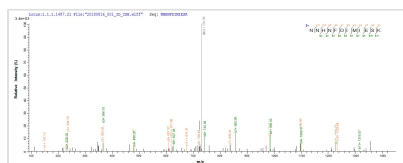




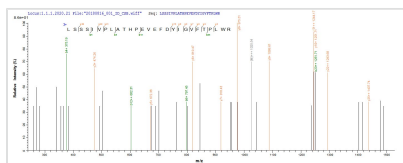
# Recombinant Bacillus cereus UV DNA damage endonuclease (uvrE)

<b>Product Code</b>	CSB-EP467668BQP
<b>Abbreviation</b>	Recombinant Bacillus cereus uvrE protein
<b>Storage</b>	The shelf life is related to many factors, storage state, buffer ingredients, storage temperature and the stability of the protein itself. Generally, the shelf life of liquid form is 6 months at -20°C/-80°C. The shelf life of lyophilized form is 12 months at -20°C/-80°C.
<b>Uniprot No.</b>	B7IR00
<b>Product Type</b>	Recombinant Protein
<b>Immunogen Species</b>	Bacillus cereus (strain G9842)
<b>Purity</b>	Greater than 85% as determined by SDS-PAGE.
<b>Sequence</b>	MIMRFGYVSHAMALWDCSPA KTMFTTSFKKLSKQEREDKLYHVIRQNLEHTIRI LHYNIAHEIPLYRLSSSIVPLATHPEVEFDYIGVFTPLWRKIGALIKEHNLRI SFHP NQFTLFTSDKPHITTAITDMTYHYKILDAIGIADSSYINIHVGGAYGNKEKAIERF HENIKKLP AHIKKQMTLEND DKTYTTSETLSICQKENIPFVFDYHHHMANLCEQ PLEELLPAIFETWSHTNISPKVHISSPRSEKEFRAHA EYIDLEFIKPFLHVAKKNN HNFDIMIESKQKDLALFRLIDELSAIRGIKRISGAMLQW
<b>Research Area</b>	Others
<b>Source</b>	E.coli
<b>Target Names</b>	uvrE
<b>Protein Names</b>	Recommended name: UV DNA damage endonuclease Short name= UV- endonuclease Short name= UVED EC= 3.-.-
<b>Expression Region</b>	1-317aa
<b>Notes</b>	Repeated freezing and thawing is not recommended. Store working aliquots at 4°C for up to one week.
<b>Tag Info</b>	N-terminal 10xHis-tagged and C-terminal Myc-tagged
<b>Mol. Weight</b>	44.0 kDa
<b>Protein Length</b>	Full Length

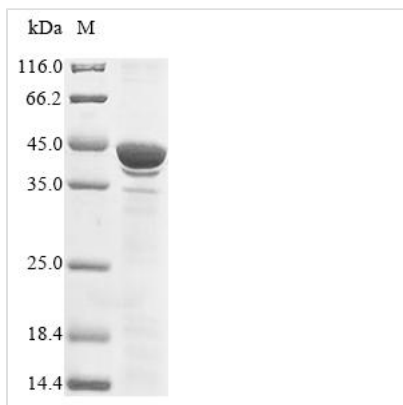
## Image



Based on the SEQUEST from database of E.coli host and target protein, the LC-MS/MS Analysis result of CSB-EP467668BQP could indicate that this peptide derived from E.coli-expressed Bacillus cereus (strain G9842) uvrE.



Based on the SEQUEST from database of E.coli host and target protein, the LC-MS/MS Analysis result of CSB-EP467668BQP could indicate that this peptide derived from E.coli-expressed *Bacillus cereus* (strain G9842) uvsE.



(Tris-Glycine gel) Discontinuous SDS-PAGE (reduced) with 5% enrichment gel and 15% separation gel.

## Reconstitution

We recommend that this vial be briefly centrifuged prior to opening to bring the contents to the bottom. Please reconstitute protein in deionized sterile water to a concentration of 0.1-1.0 mg/mL. We recommend to add 5-50% of glycerol (final concentration) and aliquot for long-term storage at -20°C/-80°C. Our default final concentration of glycerol is 50%. Customers could use it as reference.

## Shelf Life

The shelf life is related to many factors, storage state, buffer ingredients, storage temperature and the stability of the protein itself. Generally, the shelf life of liquid form is 6 months at -20°C/-80°C. The shelf life of lyophilized form is 12 months at -20°C/-80°C.