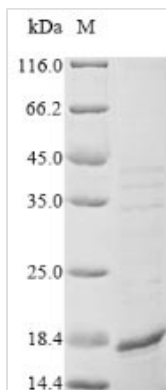




Recombinant Mycobacterium tuberculosis Malate synthase G (glcB), partial

Product Code	CSB-EP403987MON
Relevance	Involved in the glycolate utilization. Catalyzes the condensation and subsequent hydrolysis of acetyl-coenzyme A (acetyl-CoA) and glyoxylate to form malate and CoA.
Abbreviation	Recombinant Mycobacterium tuberculosis glcB protein, partial
Storage	The shelf life is related to many factors, storage state, buffer ingredients, storage temperature and the stability of the protein itself. Generally, the shelf life of liquid form is 6 months at -20°C/-80°C. The shelf life of lyophilized form is 12 months at -20°C/-80°C.
Uniprot No.	A5U3K4
Product Type	Recombinant Protein
Immunogen Species	Mycobacterium tuberculosis (strain ATCC 25177 / H37Ra)
Purity	Greater than 85% as determined by SDS-PAGE.
Sequence	GSLYDALYGTDVIPETDGAKEGPTYNKVRGDKVIAYARKFLDDSVPLSSGSFG DATGFTVQDGQLVVALPKSTGLANPGQFAGYTGAAESPTSVLLINHGLHIEILI DPESQVGTTDRAGVKDVILE
Research Area	others
Source	E.coli
Target Names	glcB
Protein Names	Recommended name: Malate synthase G EC= 2.3.3.9
Expression Region	136-263aa
Notes	Repeated freezing and thawing is not recommended. Store working aliquots at 4°C for up to one week.
Tag Info	Tag-Free
Mol. Weight	13.4kDa
Protein Length	Partial
Image	



(Tris-Glycine gel) Discontinuous SDS-PAGE (reduced) with 5% enrichment gel and 15% separation gel.

Reconstitution

We recommend that this vial be briefly centrifuged prior to opening to bring the contents to the bottom. Please reconstitute protein in deionized sterile water to a concentration of 0.1-1.0 mg/mL. We recommend to add 5-50% of glycerol (final concentration) and aliquot for long-term storage at -20°C/-80°C. Our default final concentration of glycerol is 50%. Customers could use it as reference.

Shelf Life

The shelf life is related to many factors, storage state, buffer ingredients, storage temperature and the stability of the protein itself. Generally, the shelf life of liquid form is 6 months at -20°C/-80°C. The shelf life of lyophilized form is 12 months at -20°C/-80°C.