



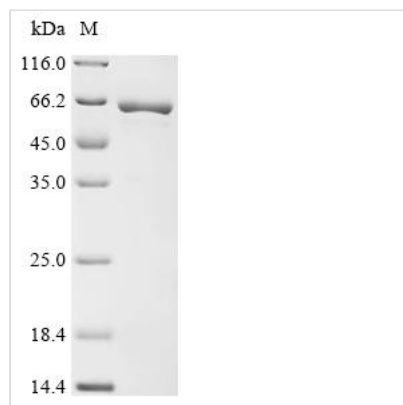
Recombinant Mycobacterium tuberculosis

Probable cytosol aminopeptidase (pepA)

Product Code	CSB-EP403717MON
Abbreviation	Recombinant Mycobacterium tuberculosis pepA protein
Storage	The shelf life is related to many factors, storage state, buffer ingredients, storage temperature and the stability of the protein itself. Generally, the shelf life of liquid form is 6 months at -20°C/-80°C. The shelf life of lyophilized form is 12 months at -20°C/-80°C.
Uniprot No.	A5U4P1
Form	Liquid or Lyophilized powder
Storage Buffer	If the delivery form is liquid, the default storage buffer is Tris/PBS-based buffer, 5%-50% glycerol. If the delivery form is lyophilized powder, the buffer before lyophilization is Tris/PBS-based buffer, 6% Trehalose.
Product Type	Recombinant Mycobacterium tuberculosis Probable cytosol aminopeptidase (pepA)
Immunogen Species	Mycobacterium tuberculosis (strain ATCC 25177 / H37Ra)
Sensitivity	Not Test
Purity	Greater than 90% as determined by SDS-PAGE.
Sequence	MTTEPGYLSPSVAVATSMPCRGVGA AVLIPVVSTGEEDRPGAVVASAEPFLR ADTVAEIEAGLRALDATGASDQVHRLAVPSLPVGSVLTVGLGKPRREW PADTI RCAAGVAARALNSSEAVITTLAELPGDGICSATVEGLILGSYRFSAFRSDKTAP KDAGLRKITVLCCA KDAKKRALHGA AVATAVATARDLVNTPPSHLFPAEFAKR AKTLSESVGLDVEVIDEKALKKAGYGGVIGVGQGSSRPRLVRLIHRGSR LAK NPQKAKKVALVGKGITFDTGGISIKPAASMHMTSDMGGA AAVIATVTLAARLR LPIDVIATVPMAENMPSATAQRPGDVL TQYGGTTVEVLNTDAEGR LILADAIVR ACEDKPDYLIETSTLTGAQTVALGTRIPGVMGSDEFDRVAAISQRVGENGW P MPLPDDLKDDLKSTVADLANVSGQRFAGMLVAGVFLREFVAESVDWAHIDVA GPAYNTGSAWGYTPKGATGVPTRTMFAVLEDIAKNG
Research Area	Others
Source	E.coli
Target Names	pepA
Expression Region	1-515aa
Notes	Repeated freezing and thawing is not recommended. Store working aliquots at 4°C for up to one week.
Tag Info	C-terminal 6xHis-tagged
Mol. Weight	60.4
Protein Length	Full Length



Image



(Tris-Glycine gel) Discontinuous SDS-PAGE (reduced) with 5% enrichment gel and 15% separation gel.

Reconstitution

We recommend that this vial be briefly centrifuged prior to opening to bring the contents to the bottom. Please reconstitute protein in deionized sterile water to a concentration of 0.1-1.0 mg/mL. We recommend to add 5-50% of glycerol (final concentration) and aliquot for long-term storage at -20°C/-80°C. Our default final concentration of glycerol is 50%. Customers could use it as reference.

Shelf Life

The shelf life is related to many factors, storage state, buffer ingredients, storage temperature and the stability of the protein itself. Generally, the shelf life of liquid form is 6 months at -20°C/-80°C. The shelf life of lyophilized form is 12 months at -20°C/-80°C.