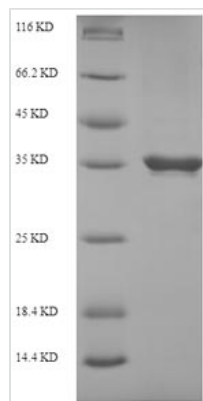




Recombinant *Coptis japonica* S-norcoclaurine synthase 2 (PR10A)

Product Code	CSB-EP381182CXF
Relevance	Involved in the biosynthesis of the common precursor of all benzyloquinoline alkaloids such as morphine, sanguinarine, codeine or berberine. Condenses dopamine and pyruvic acid or 4-hydroxyphenylpyruvate.
Abbreviation	Recombinant <i>Coptis japonica</i> PR10A protein
Storage	The shelf life is related to many factors, storage state, buffer ingredients, storage temperature and the stability of the protein itself. Generally, the shelf life of liquid form is 6 months at -20°C/-80°C. The shelf life of lyophilized form is 12 months at -20°C/-80°C.
Uniprot No.	A2A1A1
Alias	Pathogenesis related protein 10A ;CjPR10A
Product Type	Recombinant Protein
Immunogen Species	<i>Coptis japonica</i> (Japanese goldthread)
Purity	Greater than 90% as determined by SDS-PAGE.
Sequence	ERLIFNGRPLLHRVTKEETVMLYHELEVAASADEVWSVEGSPELGLHLPDLLP AGIFAKFEITGDGGEGSILDMTFPPGQFPHHYREKFVFFDHKNRYKLVEQIDGD FFDLGVTYYMDTIRVVATGPDSCVIKSTTEYHVKPEFAKIVKPLIDTVPLAIMSEA IAKVVLENKHKSSSE
Research Area	Others
Source	E.coli
Target Names	PR10A
Protein Names	Recommended name: S-norcoclaurine synthase 2 EC= 4.2.1.78 Alternative name(s): Pathogenesis related protein 10A Short name= CjPR10A
Expression Region	20-196aa
Notes	Repeated freezing and thawing is not recommended. Store working aliquots at 4°C for up to one week.
Tag Info	N-terminal 6xHis-SUMO-tagged
Mol. Weight	36.0kDa
Protein Length	Full Length of Mature Protein
Image	



(Tris-Glycine gel) Discontinuous SDS-PAGE (reduced) with 5% enrichment gel and 15% separation gel.

Reconstitution

We recommend that this vial be briefly centrifuged prior to opening to bring the contents to the bottom. Please reconstitute protein in deionized sterile water to a concentration of 0.1-1.0 mg/mL. We recommend to add 5-50% of glycerol (final concentration) and aliquot for long-term storage at -20°C/-80°C. Our default final concentration of glycerol is 50%. Customers could use it as reference.

Shelf Life

The shelf life is related to many factors, storage state, buffer ingredients, storage temperature and the stability of the protein itself. Generally, the shelf life of liquid form is 6 months at -20°C/-80°C. The shelf life of lyophilized form is 12 months at -20°C/-80°C.