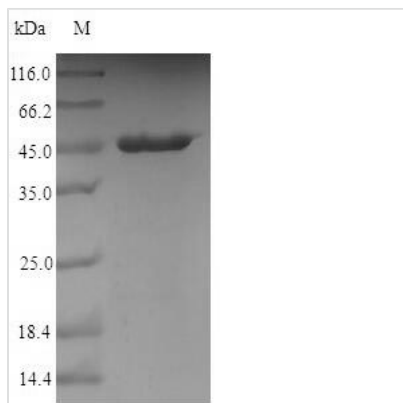




Recombinant Campylobacter jejuni subsp. Major cell-binding factor (peb1A)

Product Code	CSB-EP379898CWF
Relevance	Common antigen and a major cell adherence molecule. Most probably involved, with PEB1C, in a binding-protein-dependent transport system for an amino acid. May be involved in binding to intestinal cells
Abbreviation	Recombinant Campylobacter jejuni subsp. jejuni serotype O:23/36 peb1A protein
Storage	The shelf life is related to many factors, storage state, buffer ingredients, storage temperature and the stability of the protein itself. Generally, the shelf life of liquid form is 6 months at -20°C/-80°C. The shelf life of lyophilized form is 12 months at -20°C/-80°C.
Uniprot No.	A1VZQ4
Alias	CBF1 PEB1
Product Type	Recombinant Protein
Immunogen Species	Campylobacter jejuni subsp. jejuni serotype O:23/36 (strain 81-176)
Purity	Greater than 90% as determined by SDS-PAGE.
Sequence	AEGKLESIKSKGQLIVGVKNDVPHYALLDQATGEIKGFEVDVAKLLAKSILGDDK KIKLVAVNAKTRGPLLDNGSVDAVIATFTITPERKRIYNFSEPPYYQDAIGLLVLKE KNYKSLADMKGANIGVAQAATTCKAIGEAACKIGIDVKFSEFPDYPYSIKAALDAK RVDAFSVDKSILLGYVDDKSEILPDSFEPQSYGIVTKKDDPAFAKYVDDFVKEH KNEIDALAKKWGL
Research Area	Microbiology
Source	E.coli
Target Names	peb1A
Protein Names	Recommended name: Major cell-binding factorAlternative name(s): CBF1 PEB1
Expression Region	27-259aa
Notes	Repeated freezing and thawing is not recommended. Store working aliquots at 4°C for up to one week.
Tag Info	N-terminal 10xHis-SUMO-tagged and C-terminal Myc-tagged
Mol. Weight	45.4kDa
Protein Length	Full Length of Mature Protein
Image	



(Tris-Glycine gel) Discontinuous SDS-PAGE (reduced) with 5% enrichment gel and 15% separation gel.

Reconstitution

We recommend that this vial be briefly centrifuged prior to opening to bring the contents to the bottom. Please reconstitute protein in deionized sterile water to a concentration of 0.1-1.0 mg/mL. We recommend to add 5-50% of glycerol (final concentration) and aliquot for long-term storage at -20°C/-80°C. Our default final concentration of glycerol is 50%. Customers could use it as reference.

Shelf Life

The shelf life is related to many factors, storage state, buffer ingredients, storage temperature and the stability of the protein itself. Generally, the shelf life of liquid form is 6 months at -20°C/-80°C. The shelf life of lyophilized form is 12 months at -20°C/-80°C.