

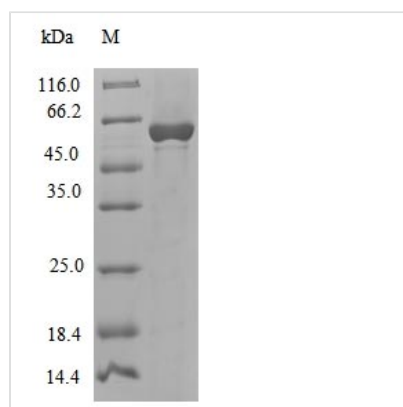


Recombinant *Cenarchaeum symbiosum* DNA polymerase II large subunit (polC), partial

Product Code	CSB-EP370095DRA
Relevance	Possesses two activities: a DNA synthesis (polymerase) and an exonucleolytic activity that degrades single-stranded DNA in the 3'- to 5'-direction. Has a template-primer preference which is characteristic of a replicative DNA polymerase
Abbreviation	Recombinant <i>Cenarchaeum symbiosum</i> polC protein, partial
Storage	The shelf life is related to many factors, storage state, buffer ingredients, storage temperature and the stability of the protein itself. Generally, the shelf life of liquid form is 6 months at -20°C/-80°C. The shelf life of lyophilized form is 12 months at -20°C/-80°C.
Uniprot No.	A0RYM0
Product Type	Recombinant Protein
Immunogen Species	<i>Cenarchaeum symbiosum</i> (strain A)
Purity	Greater than 90% as determined by SDS-PAGE.
Sequence	LAELKGAVQTGENKEDAAAKRMREVITGRSVLSMPNRLGGFRLRYGRACNTG YTSVGFHPAVAEILDHTIAVGTQVKIDIPGKGATVAFVDTIEAPTIVRLAGGDVVKI RDVAHGIELKGSIERILHLGDM LISFGDFLENNALVPSGYVEEIWKMDMEAAG AAQGSPSSADEAVRISRELGVPLHPRYLYYWDQISHEELAMLLSPLDKGDAISY PAACKPVLEKLGVP HKAGPEGPVLEGDEARIFRELILDNPPGPDASAPVPELIS RSSGITIRDKFSTSIGVRIGRPEKAAPRQMRPPTHCLFPVGGTGGPTNNLLKSA ARPGFSADILSRRCPGCGEPSISIRCWACGERTAVERTCMQCGTDVDGEECE RCGRPGLAHSRVEFPLKKMLVSAQEKTGVRAHDPLKGVKELAHQDRIAEPL KGLIRQSRSLTVFKDGTVRFDATNSPMTHFKPSWIGTSAEKLRELGYETDVDG KKLEGPDQLVELRMQDIVIPLEGAKYLVSACGYIDAELDKLYGAPPFYKVPDLG GLIGHLVVGLA
Research Area	others
Source	E.coli
Target Names	polC
Protein Names	Recommended name: DNA polymerase II large subunit Short name= Pol II EC= 2.7.7.7
Expression Region	287-832aa
Notes	Repeated freezing and thawing is not recommended. Store working aliquots at 4°C for up to one week.
Tag Info	Tag-Free
Mol. Weight	59.0kDa
Protein Length	Partial



Image



(Tris-Glycine gel) Discontinuous SDS-PAGE (reduced) with 5% enrichment gel and 15% separation gel.

Description

The recombinant *Cenarchaeum symbiosum* (strain A) polC was expressed with the amino acid range of 287-832. This polC protein is theoretically predicted to have a molecular weight of 59 kDa. This protein is generated in a *e.coli*-based system. Fusion of the Tag-Free into the polC encoding gene fragment was conducted, allowing for easier detection and purification of the polC protein in subsequent stages.

Cenarchaeum symbiosum DNA Polymerase II Large Subunit (polC) is a pivotal enzyme in DNA replication processes within the archaeon *Cenarchaeum symbiosum*. Its main function involves synthesizing DNA strands during cell division and genome maintenance. Its research areas include unraveling its role in genome stability and exploring its applications in studying archaeal genetics. In molecular biology and archaeal genetics, polC is a key focus for understanding DNA replication mechanisms. The enzyme's significance lies in providing insights into fundamental biological processes, contributing to advancements in archaeal molecular biology.

Reconstitution

We recommend that this vial be briefly centrifuged prior to opening to bring the contents to the bottom. Please reconstitute protein in deionized sterile water to a concentration of 0.1-1.0 mg/mL. We recommend to add 5-50% of glycerol (final concentration) and aliquot for long-term storage at -20°C/-80°C. Our default final concentration of glycerol is 50%. Customers could use it as reference.

Shelf Life

The shelf life is related to many factors, storage state, buffer ingredients, storage temperature and the stability of the protein itself. Generally, the shelf life of liquid form is 6 months at -20°C/-80°C. The shelf life of lyophilized form is 12 months at -20°C/-80°C.