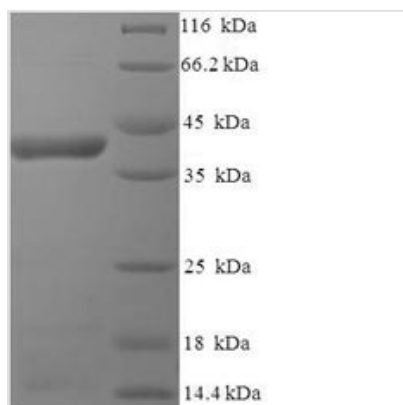




Recombinant Human respiratory syncytial virus A Major surface glycoprotein G (G), partial

Product Code	CSB-EP365937HPO
Relevance	Attaches the virion to the host cell mbrane by interacting with heparan sulfate, initiating the infection. Interacts with host CX3CR1, the receptor for the CX3C chokine fractalkine, to modulate the immune response and facilitate infection. Unlike the other paramyxovirus attachment proteins, lacks both neuraminidase and hagglutinating activities.Secreted glycoprotein G helps RSV escape antibody-dependent restriction of replication by acting as an antigen decoy and by modulating the activity of leukocytes bearing Fcgamma receptors.
Abbreviation	Recombinant Human respiratory syncytial virus A Major surface glycoprotein G, partial
Storage	The shelf life is related to many factors, storage state, buffer ingredients, storage temperature and the stability of the protein itself. Generally, the shelf life of liquid form is 6 months at -20°C/-80°C. The shelf life of lyophilized form is 12 months at -20°C/-80°C.
Uniprot No.	P03423
Alias	Attachment glycoprotein GMembrane-bound glycoprotein ;mG
Product Type	Recombinant Protein
Immunogen Species	Human respiratory syncytial virus A (strain A2)
Purity	Greater than 90% as determined by SDS-PAGE.
Sequence	HKVTPTTAIQDATSQIKNTTPTYLTQNPQLGISPSNPSEITSQITTILASTTPGVK STLQSTTVKTKNTTTTQTQPSKPTTKQRQNKPPSKPNNDFHFEVFNFPVPC SIC SNNPTCWAICKRIPNKKPGKKTTHKPTTKPTLKTTHKDPKPQTTSKEVPTTKP TEEPTINTTKTNIITLLTSNTTGNPELTSQMETFHSTSSEGNPSPSQVSTTSEY PSQPSSPPNTPRQ
Source	E.coli
Target Names	G
Protein Names	Attachment glycoprotein GMembrane-bound glycoprotein ;mG
Expression Region	67-298aa
Notes	Repeated freezing and thawing is not recommended. Store working aliquots at 4°C for up to one week.
Tag Info	N-terminal 6xHis-SUMO-tagged
Mol. Weight	41.3 kDa
Protein Length	Partial
Image	



(Tris-Glycine gel) Discontinuous SDS-PAGE (reduced) with 5% enrichment gel and 15% separation gel.

Reconstitution

We recommend that this vial be briefly centrifuged prior to opening to bring the contents to the bottom. Please reconstitute protein in deionized sterile water to a concentration of 0.1-1.0 mg/mL. We recommend to add 5-50% of glycerol (final concentration) and aliquot for long-term storage at -20°C/-80°C. Our default final concentration of glycerol is 50%. Customers could use it as reference.

Shelf Life

The shelf life is related to many factors, storage state, buffer ingredients, storage temperature and the stability of the protein itself. Generally, the shelf life of liquid form is 6 months at -20°C/-80°C. The shelf life of lyophilized form is 12 months at -20°C/-80°C.