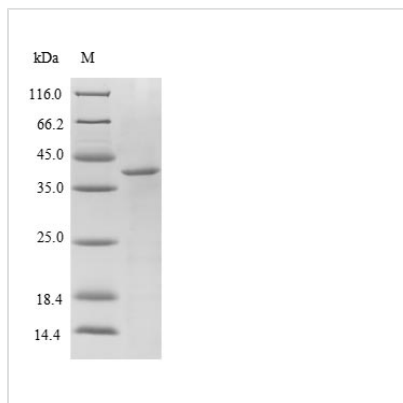




Recombinant Escherichia coli O6:H1 Peptidyl-prolyl cis-trans isomerase A (ppiA)

Product Code	CSB-EP365318EGX
Relevance	PPIases accelerate the folding of proteins. It catalyzes the cis-trans isomerization of proline imidic peptide bonds in oligopeptides
Abbreviation	Recombinant E.coli O6:H1 ppiA protein
Storage	The shelf life is related to many factors, storage state, buffer ingredients, storage temperature and the stability of the protein itself. Generally, the shelf life of liquid form is 6 months at -20°C/-80°C. The shelf life of lyophilized form is 12 months at -20°C/-80°C.
Uniprot No.	P0AFL4
Alias	Cyclophilin A Rotamase A
Product Type	Recombinant Protein
Immunogen Species	Escherichia coli O6:H1 (strain CFT073 / ATCC 700928 / UPEC)
Purity	Greater than 85% as determined by SDS-PAGE.
Sequence	AKGDPHVLLTTSAGNIELELDKQKAPVSVQNFVDYVNSGFYNNTTFHRVIPGF MIQGGGFTEQMQQKKPNPPIKNEADNGLRNTRGTIAMARTADKDSATSQFFIN VADNAFLDHGQRDFGYAVFGKVVKGMDVADKISQVPTHDVGPYQNVPSKPV VILSAKVLP
Research Area	Immunology
Source	E.coli
Target Names	ppiA
Protein Names	Recommended name: Peptidyl-prolyl cis-trans isomerase A Short name= PPIase A EC= 5.2.1.8 Alternative name(s): Cyclophilin A Rotamase A
Expression Region	25-190aa
Notes	Repeated freezing and thawing is not recommended. Store working aliquots at 4°C for up to one week.
Tag Info	N-terminal 10xHis-SUMO-tagged and C-terminal Myc-tagged
Mol. Weight	38.1kDa
Protein Length	Full Length of Mature Protein
Image	



(Tris-Glycine gel) Discontinuous SDS-PAGE (reduced) with 5% enrichment gel and 15% separation gel.

Reconstitution

We recommend that this vial be briefly centrifuged prior to opening to bring the contents to the bottom. Please reconstitute protein in deionized sterile water to a concentration of 0.1-1.0 mg/mL. We recommend to add 5-50% of glycerol (final concentration) and aliquot for long-term storage at -20°C/-80°C. Our default final concentration of glycerol is 50%. Customers could use it as reference.

Shelf Life

The shelf life is related to many factors, storage state, buffer ingredients, storage temperature and the stability of the protein itself. Generally, the shelf life of liquid form is 6 months at -20°C/-80°C. The shelf life of lyophilized form is 12 months at -20°C/-80°C.