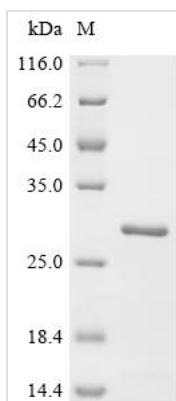




# Recombinant Shigella flexneri Peptidoglycan-associated lipoprotein (pal)

<b>Product Code</b>	CSB-EP364258SZB
<b>Abbreviation</b>	Recombinant Shigella flexneri pal protein
<b>Storage</b>	The shelf life is related to many factors, storage state, buffer ingredients, storage temperature and the stability of the protein itself. Generally, the shelf life of liquid form is 6 months at -20°C/-80°C. The shelf life of lyophilized form is 12 months at -20°C/-80°C.
<b>Uniprot No.</b>	P0A914
<b>Form</b>	Liquid or Lyophilized powder
<b>Storage Buffer</b>	If the delivery form is liquid, the default storage buffer is Tris/PBS-based buffer, 5%-50% glycerol. If the delivery form is lyophilized powder, the buffer before lyophilization is Tris/PBS-based buffer, 6% Trehalose, pH 8.0.
<b>Product Type</b>	Recombinant Macaca mulatta Solute carrier family 10 member 1 (SLC10A1)-VLPs
<b>Immunogen Species</b>	Shigella flexneri
<b>Sensitivity</b>	Not Test
<b>Purity</b>	Greater than 90% as determined by SDS-PAGE.
<b>Sequence</b>	CSSNKNASNDGSEGMLGAGTGMDANGGNGNMSSEEQARLQMQQQLQQNNIV YFDLDKYDIRSDFDAQMLDAHANFLRSNPSYKVTVEGHADERGTPEYNISLGER RANAVKMYLQGKGVSADQISIVSYGKEKPAVLGHDEAAYSKNRRRAVLVY
<b>Research Area</b>	Others
<b>Source</b>	E.coli
<b>Target Names</b>	pal
<b>Expression Region</b>	22-173aa
<b>Notes</b>	The VLPs are expressed from human 293 cells (HEK293). Mix the sample gently by repeatedly pipetting it up and down. Do not vortex. Repeated freezing and thawing is not recommended. Store the protein at -20°C/-80°C upon receiving it, and ensure to avoid repeated freezing and thawing, otherwise, it will affect the protein activity. The immunization strategy should be optimized (antigen dose, regimen and adjuvant).
<b>Tag Info</b>	C-terminal 6xHis-tagged
<b>Mol. Weight</b>	23.5 kDa
<b>Protein Length</b>	Full Length of Mature Protein
<b>Image</b>	



(Tris-Glycine gel) Discontinuous SDS-PAGE (reduced) with 5% enrichment gel and 15% separation gel.

### Reconstitution

We recommend that this vial be briefly centrifuged prior to opening to bring the contents to the bottom. Please reconstitute protein in deionized sterile water to a concentration of 0.1-1.0 mg/mL. Aliquot for long-term storage at -80°C. Solubilize for 60 minutes at room temperature with occasional gentle mixing. Avoid vigorous shaking or vortexing.

### Shelf Life

The shelf life is related to many factors, storage state, buffer ingredients, storage temperature and the stability of the protein itself. Generally, the shelf life of liquid form is 6 months at -20°C/-80°C. The shelf life of lyophilized form is 12 months at -20°C/-80°C.