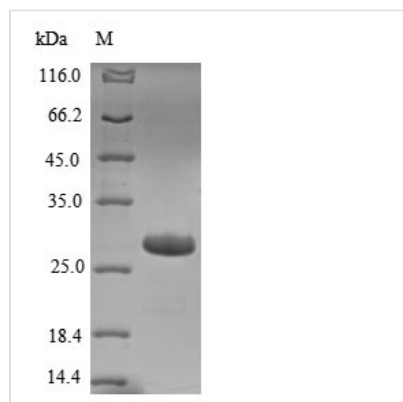




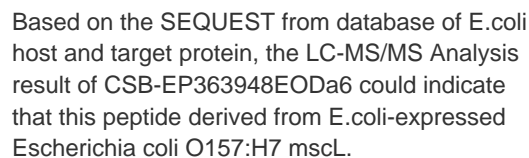
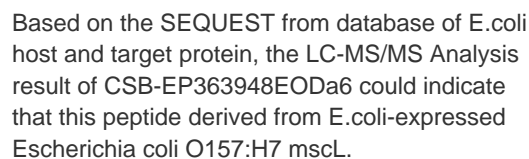
Recombinant Escherichia coli O157:H7 Large-conductance mechanosensitive channel (mscL)

Product Code	CSB-EP363948EODa6
Relevance	Channel that opens in response to stretch forces in the membrane lipid bilayer. May participate in the regulation of osmotic pressure changes within the cell (By similarity).
Abbreviation	Recombinant E.coli O157:H7 mscL protein
Storage	The shelf life is related to many factors, storage state, buffer ingredients, storage temperature and the stability of the protein itself. Generally, the shelf life of liquid form is 6 months at -20°C/-80°C. The shelf life of lyophilized form is 12 months at -20°C/-80°C.
Uniprot No.	P0A743
Product Type	Recombinant Protein
Immunogen Species	Escherichia coli O157:H7
Purity	Greater than 85% as determined by SDS-PAGE.
Sequence	MSIIKEFREFAMRGNVVDLAVGVIIIGAAFGKIVSSLVADIIMPPLGLLIGGIDFKQF AVTLRDAQGDIPAVVMHYGVFIQNVDFLIVAFMAIKLINKLNRRKKEEPAAAP APTKEEVLLTEIRDLLKEQNNRS
Research Area	Others
Source	E.coli
Target Names	mscL
Expression Region	1-136aa
Notes	Repeated freezing and thawing is not recommended. Store working aliquots at 4°C for up to one week.
Tag Info	N-terminal 6xHis-B2M-tagged
Mol. Weight	29.0 kDa
Protein Length	Full Length

Image



(Tris-Glycine gel) Discontinuous SDS-PAGE (reduced) with 5% enrichment gel and 15% separation gel.



We recommend that this vial be briefly centrifuged prior to opening to bring the contents to the bottom. Please reconstitute protein in deionized sterile water to a concentration of 0.1-1.0 mg/mL. We recommend to add 5-50% of glycerol (final concentration) and aliquot for long-term storage at -20°C/-80°C. Our default final concentration of glycerol is 50%. Customers could use it as reference.

The shelf life is related to many factors, storage state, buffer ingredients, storage temperature and the stability of the protein itself. Generally, the shelf life of liquid form is 6 months at -20°C/-80°C. The shelf life of lyophilized form is 12 months at -20°C/-80°C.