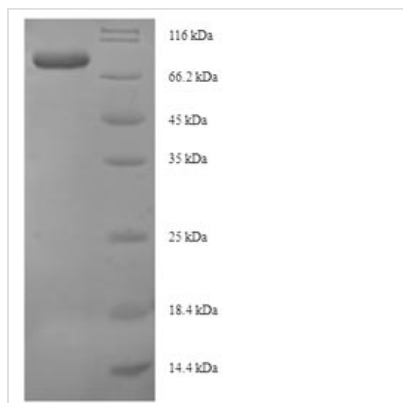




Recombinant Escherichia coli Glutamate--cysteine ligase (gshA)

Product Code	CSB-EP363915ENV
Abbreviation	Recombinant E.coli gshA protein
Storage	The shelf life is related to many factors, storage state, buffer ingredients, storage temperature and the stability of the protein itself. Generally, the shelf life of liquid form is 6 months at -20°C/-80°C. The shelf life of lyophilized form is 12 months at -20°C/-80°C.
Uniprot No.	P0A6W9
Alias	Gamma-ECS ;GCSGamma-glutamylcysteine synthetase
Product Type	Recombinant Protein
Immunogen Species	Escherichia coli (strain K12)
Purity	Greater than 90% as determined by SDS-PAGE.
Sequence	MIPDVSQALAWLEKHPQALKGIQRGLERETLRVNADGTLATTGHPEALGSALT HKWITTDFAEALLEFITPVDGDIEHMLTFMRDLHRYTARNMGDERMWPLSMPC YIAEGQDIELAQYGTSNTGRFKTLYREGLKNRYGALMQTISGVHYNFSLPMAF WQAKCGDISGADAKEKISAGYFRVIRNYYRFGWVIPYLFGASPAICSSFLQGKP TSLPFEKTECGMYYPYATSLRLSDLGYTNKSQSNLGITFNDLYEYVAGLKQAI KTPSEEYAKIGIEKD GKRLQINSNVLQIENELYAPIRPKRVTRSGESPSDALLRG GIEYIEVRSLDINPFSPIGVDEQQVRFLDLFMVWCALADAPEMSSELACTRVN WNRVILEGRKPGLTLGIGCETAQFPLPQVGKDLFRDLKRVAQTLDSINGGEAY QKVCDELVACFDNPDLTFSARILRSMIDTGIGGTGKAFAEAYRNLLREEPLEILR EEDFVAEREASERRQQEMEADTEPFAVWLEKHA
Research Area	Others
Source	E.coli
Target Names	gshA
Protein Names	Recommended name: Glutamate--cysteine ligase EC= 6.3.2.2 Alternative name(s): Gamma-ECS Short name= GCS Gamma-glutamylcysteine synthetase
Expression Region	1-518aa
Notes	Repeated freezing and thawing is not recommended. Store working aliquots at 4°C for up to one week.
Tag Info	N-terminal 6xHis-SUMO-tagged
Mol. Weight	74.3kDa
Protein Length	Full Length
Image	



(Tris-Glycine gel) Discontinuous SDS-PAGE (reduced) with 5% enrichment gel and 15% separation gel.

Reconstitution

We recommend that this vial be briefly centrifuged prior to opening to bring the contents to the bottom. Please reconstitute protein in deionized sterile water to a concentration of 0.1-1.0 mg/mL. We recommend to add 5-50% of glycerol (final concentration) and aliquot for long-term storage at -20°C/-80°C. Our default final concentration of glycerol is 50%. Customers could use it as reference.

Shelf Life

The shelf life is related to many factors, storage state, buffer ingredients, storage temperature and the stability of the protein itself. Generally, the shelf life of liquid form is 6 months at -20°C/-80°C. The shelf life of lyophilized form is 12 months at -20°C/-80°C.