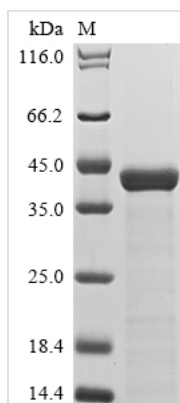




# Recombinant *Saccharomyces cerevisiae*

## Saccharopepsin (PEP4)

<b>Product Code</b>	CSB-EP362092SVG
<b>Abbreviation</b>	Recombinant <i>Saccharomyces cerevisiae</i> PEP4 protein
<b>Storage</b>	The shelf life is related to many factors, storage state, buffer ingredients, storage temperature and the stability of the protein itself. Generally, the shelf life of liquid form is 6 months at -20°C/-80°C. The shelf life of lyophilized form is 12 months at -20°C/-80°C.
<b>Uniprot No.</b>	P07267
<b>Product Type</b>	Recombinant Proteins
<b>Immunogen Species</b>	<i>Saccharomyces cerevisiae</i> (strain ATCC 204508 / S288c) (Baker's yeast)
<b>Purity</b>	Greater than 85% as determined by SDS-PAGE.
<b>Sequence</b>	GGHDVPLTNYLNAQYYTDITLGTPPQNFKVILDTGSSNLWVPSNECGSLACFL HSKYDHEASSSYKANGTEFAIQYGTGSLEGYISQDTLSIGDLTIPKQDFAEATS EPGLTFAFGKFDGILGLGYDTISVDKVVPPFYNAIQDILLDEKRFAFYLGDTSK DTENGGEATFGGIDESKFKGDITWLPVRRKAYWEVKFEGIGLGDEYAELESHG AAIDTGTSLITLPSGLAEMINAEIGAKKGWTGQYTLDCNTRDNLPLIFNFNGYN FTIGPYDYTLEVSGSCISAITPMDFPPEVGPLAIVGDAFLRKYYSIYDLGNNAVG LAKAI
<b>Research Area</b>	Cell Biology
<b>Source</b>	E.coli
<b>Target Names</b>	PEP4
<b>Protein Names</b>	Recommended name: Saccharopepsin EC= 3.4.23.25 Alternative name(s): Aspartate protease Short name= Proteinase A Carboxypeptidase Y-deficient protein 4 Proteinase YSCA
<b>Expression Region</b>	77-405aa
<b>Notes</b>	Repeated freezing and thawing is not recommended. Store working aliquots at 4°C for up to one week.
<b>Tag Info</b>	N-terminal 10xHis-tagged
<b>Mol. Weight</b>	39.4 kDa
<b>Protein Length</b>	Full Length of Mature Protein
<b>Image</b>	



(Tris-Glycine gel) Discontinuous SDS-PAGE (reduced) with 5% enrichment gel and 15% separation gel.

## Shelf Life

The shelf life is related to many factors, storage state, buffer ingredients, storage temperature and the stability of the protein itself. Generally, the shelf life of liquid form is 6 months at -20°C/-80°C. The shelf life of lyophilized form is 12 months at -20°C/-80°C.