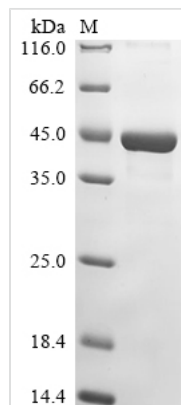




Recombinant Escherichia phage lambda Integrase (int)

Product Code	CSB-EP361128ECW
Abbreviation	Recombinant Escherichia phage lambda Integrase protein
Storage	The shelf life is related to many factors, storage state, buffer ingredients, storage temperature and the stability of the protein itself. Generally, the shelf life of liquid form is 6 months at -20°C/-80°C. The shelf life of lyophilized form is 12 months at -20°C/-80°C.
Uniprot No.	P03700
Form	Liquid or Lyophilized powder
Storage Buffer	If the delivery form is liquid, the default storage buffer is Tris/PBS-based buffer, 5%-50% glycerol. If the delivery form is lyophilized powder, the buffer before lyophilization is Tris/PBS-based buffer, 6% Trehalose.
Product Type	Recombinant Protein
Immunogen Species	Escherichia phage lambda (Bacteriophage lambda)
Purity	Greater than 85% as determined by SDS-PAGE.
Sequence	MGRRRSHERDLPPNLYIRNNGYYCYRDPRTGKEFGLGRDRRIAITEAIQANIE LFSGHKHKPLTARINSVTLHSLWLDTRYEKILASRGIKQKTLINYMSKIKAIRR GLPDAPLEDITTKEIAAMLNGYIDEGKAASAKLIRSTLSDAFREIAAEGHITTNHV AATRAAKSEVRRSRLTADEYLYKIQAAESSPCWLRRLAMELAVVTGQRVGDLCE MKWSDIVDGYLYVEQSKTGVKIAIPTALHIDALGISMKETLDKCKEILGGETIIAS TRREPLSSGTVSRYFMRARKASGLSFEGDPPTFHELRSLSARLYEKQISDKFA QHLLGHKSDTMASQYRDDRGREWDKIEIK
Research Area	Microbiology
Source	E.coli
Target Names	int
Expression Region	1-356aa
Notes	Repeated freezing and thawing is not recommended. Store working aliquots at 4°C for up to one week.
Tag Info	N-terminal 6xHis-tagged
Mol. Weight	46.3 kDa
Protein Length	Full Length
Image	



(Tris-Glycine gel) Discontinuous SDS-PAGE (reduced) with 5% enrichment gel and 15% separation gel.

Description

In the process of producing the recombinant Escherichia phage lambda (Bacteriophage lambda) int protein, e.coli cells are transfected with a DNA expression vector containing the gene for the desired protein (1-356aa). Subsequent culturing induces the expression of the intended protein. The protein is fused with a N-terminal 6xHis tag. The recombinant Escherichia phage lambda (Bacteriophage lambda) int protein is then collected and purified from the cell lysate through affinity purification, displaying a purity exceeding 85%, as verified by SDS-PAGE.

Reconstitution

We recommend that this vial be briefly centrifuged prior to opening to bring the contents to the bottom. Please reconstitute protein in deionized sterile water to a concentration of 0.1-1.0 mg/mL. We recommend to add 5-50% of glycerol (final concentration) and aliquot for long-term storage at -20°C/-80°C. Our default final concentration of glycerol is 50%. Customers could use it as reference.

Shelf Life

The shelf life is related to many factors, storage state, buffer ingredients, storage temperature and the stability of the protein itself. Generally, the shelf life of liquid form is 6 months at -20°C/-80°C. The shelf life of lyophilized form is 12 months at -20°C/-80°C.