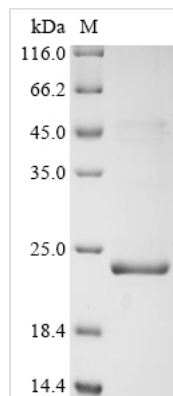




Recombinant Measles virus Phosphoprotein (P/V), partial

Product Code	CSB-EP361049MCQ
Abbreviation	Recombinant Measles virus Phosphoprotein, partial
Storage	The shelf life is related to many factors, storage state, buffer ingredients, storage temperature and the stability of the protein itself. Generally, the shelf life of liquid form is 6 months at -20°C/-80°C. The shelf life of lyophilized form is 12 months at -20°C/-80°C.
Uniprot No.	P03422
Form	Liquid or Lyophilized powder
Storage Buffer	If the delivery form is liquid, the default storage buffer is Tris/PBS-based buffer, 5%-50% glycerol. If the delivery form is lyophilized powder, the buffer before lyophilization is Tris/PBS-based buffer, 6% Trehalose.
Product Type	Recombinant Protein
Immunogen Species	Measles virus (strain Edmonston) (MeV) (Subacute sclerose panencephalitis virus)
Purity	Greater than 90% as determined by SDS-PAGE.
Sequence	ASRSVIRSIKSSRLEEDRKRYLMTLLDDIKGANDLAKFHQMLMKIIMK
Research Area	Microbiology
Source	E.coli
Target Names	P/V
Expression Region	459-507aa
Notes	Repeated freezing and thawing is not recommended. Store working aliquots at 4°C for up to one week.
Tag Info	N-terminal 6xHis-KSI-tagged
Mol. Weight	21.1 kDa
Protein Length	Partial
Image	



(Tris-Glycine gel) Discontinuous SDS-PAGE (reduced) with 5% enrichment gel and 15% separation gel.

Description

To generate a recombinant measles virus phosphoprotein with an N-terminal 6xHis-KSI tag in *E. coli*, follow these steps. First, clone the gene fragment encoding amino acids 459-507 of the measles virus phosphoprotein into an expression vector that allows for the addition of the 6xHis-KSI tag. Next, transform the recombinant vector into *E. coli* cells using a suitable method. Then, culture the transformed cells in a growth medium and induce protein expression using an inducer molecule like IPTG. After incubation, harvest the cells and lyse them to release the protein. Finally, purify and isolate the recombinant measles virus phosphoprotein from the cell lysate. The purity of the recombinant measles virus phosphoprotein is over 90%, as measured by SDS-PAGE. It appears as a band with a molecular weight of 22 kDa on the gel.

Reconstitution

We recommend that this vial be briefly centrifuged prior to opening to bring the contents to the bottom. Please reconstitute protein in deionized sterile water to a concentration of 0.1-1.0 mg/mL. We recommend to add 5-50% of glycerol (final concentration) and aliquot for long-term storage at -20°C/-80°C. Our default final concentration of glycerol is 50%. Customers could use it as reference.

Shelf Life

The shelf life is related to many factors, storage state, buffer ingredients, storage temperature and the stability of the protein itself. Generally, the shelf life of liquid form is 6 months at -20°C/-80°C. The shelf life of lyophilized form is 12 months at -20°C/-80°C.