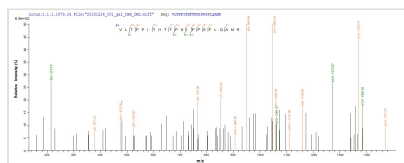




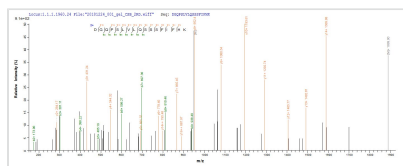
Recombinant Human T-cell leukemia virus 1 Protein Tax-1 (tax)

Product Code	CSB-EP361045HQJ
Abbreviation	Recombinant Human T-cell leukemia virus 1 Tax-1 protein
Storage	The shelf life is related to many factors, storage state, buffer ingredients, storage temperature and the stability of the protein itself. Generally, the shelf life of liquid form is 6 months at -20°C/-80°C. The shelf life of lyophilized form is 12 months at -20°C/-80°C.
Uniprot No.	P03409
Storage Buffer	Tris-based buffer,50% glycerol
Product Type	Recombinant Protein
Immunogen Species	Human T-cell leukemia virus 1 (strain Japan ATK-1 subtype A) (HTLV-1)
Purity	Greater than 85% as determined by SDS-PAGE.
Sequence	MAHFPFGFGQSLLFGYPVYVFGDCVQGDWCPISSGGLCSARLHRHALLATCPEH QITWDPIDGRVIGSALQFLIPRLPSFPTQRTSKTLKVLTPPITHHTPNIPPSFLQA MRKYSPPFRNGYMEPTLGQHLPTLSFPDPGLRPQNLYTLWGGSVVCMYLYQL SPPITWPLLPHVIFCHPGQLGAFTNVPYKRIEELLYKISLTGALIILPEDCLPTT LFQPARAPVTLTAWQNGLLPFHSTLTTPGLIWTFTDGTMPISGPCPKDGGQPSL VLQSSSFIFHKFQTKAYHPSFLLSHGLIQYSSFHSLHLLFEEYTNIPISLLFNEKE ADDNDHEPQISPGGLEPPSEKHFRETEV
Research Area	Cancer
Source	E.coli
Target Names	tax
Protein Names	Recommended name: Protein Tax-1Alternative name(s): Protein X-LOR Short name= Protein PX Trans-activating transcriptional regulatory protein of HTLV-1
Expression Region	1-353aa
Notes	Repeated freezing and thawing is not recommended. Store working aliquots at 4°C for up to one week.
Tag Info	N-terminal 10xHis-SUMO-tagged and C-terminal Myc-tagged
Mol. Weight	55.5 kDa
Protein Length	Full Length

Image



Based on the SEQUEST from database of E.coli host and target protein, the LC-MS/MS Analysis result of CSB-EP361045HQJ could indicate that this peptide derived from E.coli-expressed Human T-cell leukemia virus 1 (strain Japan ATK-1 subtype A) (HTLV-1) tax.



Based on the SEQUEST from database of E.coli host and target protein, the LC-MS/MS Analysis result of CSB-EP361045HQJ could indicate that this peptide derived from E.coli-expressed Human T-cell leukemia virus 1 (strain Japan ATK-1 subtype A) (HTLV-1) tax.

Description

The expression of the recombinant Human T-cell leukemia virus 1 (strain Japan ATK-1 subtype A) tax protein involves the construction of a plasmid encoding the Human T-cell leukemia virus 1 (strain Japan ATK-1 subtype A) tax protein (1-353aa). This resulting plasmid is introduced into e.coli cells. Positive e.coli cells are selected and cultured for the protein expression. The protein is fused with a N-terminal 10xHis-SUMO tag and C-terminal Myc tag. After that, cultured cells are lysed. The subsequent step includes purifying the recombinant Human T-cell leukemia virus 1 (strain Japan ATK-1 subtype A) tax protein through affinity purification from the cell lysate and assessing the purity of the protein via SDS-PAGE. The purity of the recombinant tax protein is greater than 85%.

Reconstitution

We recommend that this vial be briefly centrifuged prior to opening to bring the contents to the bottom. Please reconstitute protein in deionized sterile water to a concentration of 0.1-1.0 mg/mL. We recommend to add 5-50% of glycerol (final concentration) and aliquot for long-term storage at -20°C/-80°C. Our default final concentration of glycerol is 50%. Customers could use it as reference.

Shelf Life

The shelf life is related to many factors, storage state, buffer ingredients, storage temperature and the stability of the protein itself. Generally, the shelf life of liquid form is 6 months at -20°C/-80°C. The shelf life of lyophilized form is 12 months at -20°C/-80°C.