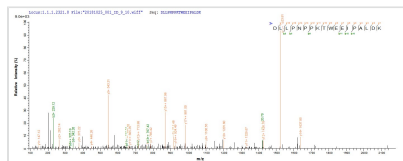




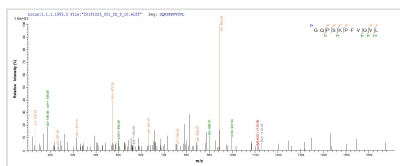
Recombinant Escherichia coli Maltose-binding periplasmic protein (malE)

Product Code	CSB-EP360183ENV
Abbreviation	Recombinant E.coli malE protein
Storage	The shelf life is related to many factors, storage state, buffer ingredients, storage temperature and the stability of the protein itself. Generally, the shelf life of liquid form is 6 months at -20°C/-80°C. The shelf life of lyophilized form is 12 months at -20°C/-80°C.
Uniprot No.	P0AEX9
Storage Buffer	Tris-based buffer,50% glycerol
Product Type	Recombinant Protein
Immunogen Species	Escherichia coli (strain K12)
Purity	Greater than 90% as determined by SDS-PAGE.
Sequence	KIEEGKLVIWINGDKGYNGLAEVGGKFEKDTGIKVTVEHPDKLEEKFPQVAATG DGPDIIFWAHDRFGGYAQSGLLAEITPDKAFQDKLYPFTWDAVRYNGKLIAYPI AVEALSLIYNKDLLPNPPKTWEEIPALDKELKAKGKSALMFNLQEPYFTWPLIAA DGGYAFKYENGKYDIKDVGVNDAGAKAGLTFLVDLIKNNHNMNADTDYSIAEAA FNKGETAMTINGPWAWSNIDTSKVNYGVTVLPTFKGQPSKPFVGVLSAGINAA SPNKELAKEFLENYLLTDEGLEAVNKDKPLGAVALKSYYYEELAKDPRIAATMEN AQKGEIMPNIQMSAFWYAVRTAVINAASGRQTVDEALKDAQTRITK
Research Area	Tags & Cell Markers
Source	E.coli
Target Names	malE
Protein Names	Recommended name: Maltose-binding periplasmic proteinAlternative name(s): MBP MMBP Maltodextrin-binding protein
Expression Region	27-396aa
Notes	Repeated freezing and thawing is not recommended. Store working aliquots at 4°C for up to one week.
Tag Info	N-terminal 10xHis-tagged and C-terminal Myc-tagged
Mol. Weight	48.2 kDa
Protein Length	Full Length of Mature Protein

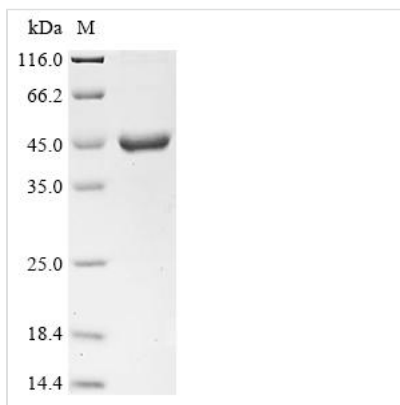
Image



Based on the SEQUEST from database of E.coli host and target protein, the LC-MS/MS Analysis result of CSB-EP360183ENV could indicate that this peptide derived from E.coli-expressed Escherichia coli (strain K12) malE.



Based on the SEQUEST from database of E.coli host and target protein, the LC-MS/MS Analysis result of CSB-EP360183ENV could indicate that this peptide derived from E.coli-expressed Escherichia coli (strain K12) malE.



(Tris-Glycine gel) Discontinuous SDS-PAGE (reduced) with 5% enrichment gel and 15% separation gel.

Description

Our Recombinant Escherichia coli malE protein is an exceptional choice for researchers focusing on tags and cell markers. This full-length mature Maltose/maltodextrin-binding periplasmic protein (MMBP; Maltodextrin-binding protein; Maltose-binding protein) is derived from the Escherichia coli (strain K12) species and has an expression region of 27-396aa.

Expressed in E. coli, the malE protein is designed with N-terminal 10xHis and C-terminal Myc tags for seamless detection and purification processes. Boasting a purity greater than 90% as assessed by SDS-PAGE, the Recombinant Escherichia coli malE protein is supplied as a lyophilized powder, ensuring a reliable and high-quality product for your research needs.

Reconstitution

We recommend that this vial be briefly centrifuged prior to opening to bring the contents to the bottom. Please reconstitute protein in deionized sterile water to a concentration of 0.1-1.0 mg/mL. We recommend to add 5-50% of glycerol (final concentration) and aliquot for long-term storage at -20°C/-80°C. Our default final concentration of glycerol is 50%. Customers could use it as reference.

Shelf Life

The shelf life is related to many factors, storage state, buffer ingredients, storage temperature and the stability of the protein itself. Generally, the shelf life of liquid form is 6 months at -20°C/-80°C. The shelf life of lyophilized form is 12 months at -20°C/-80°C.