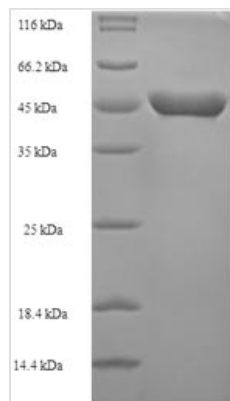




Recombinant Escherichia coli Methionine aminopeptidase (map)

Product Code	CSB-EP360042ENV
Relevance	Roves the N-terminal methionine from nascent proteins. The N-terminal methionine is often cleaved when the second residue in the primary sequence is small and uncharged (Met-Ala-, Cys, Gly, Pro, Ser, Thr, or Val). Requires deformylation of the N(alpha)-formylated initiator methionine before it can be hydrolyzed.
Abbreviation	Recombinant E.coli map protein
Storage	The shelf life is related to many factors, storage state, buffer ingredients, storage temperature and the stability of the protein itself. Generally, the shelf life of liquid form is 6 months at -20°C/-80°C. The shelf life of lyophilized form is 12 months at -20°C/-80°C.
Uniprot No.	P0AE18
Alias	Peptidase M
Product Type	Recombinant Protein
Immunogen Species	Escherichia coli (strain K12)
Purity	Greater than 90% as determined by SDS-PAGE.
Sequence	AISIKTPEDIEKMRVAGRLAAEVLEMIEPYVKPGVSTGELDRICNDYIVNEQHAV SACLGYPKSVCSINEVVCHGIPDDAKLLKDGDIVNIDVTVIKDGFGDTSK MFIVGKPTIMGERLCRITQESLYLALRMVKPGINLREIGAAIQKFVEAEGFSVVR EYCGHGIGRGFHEEPQVLHYDSRETNVVLKPGMTFTIEPMVNAGKKEIRTMKD GWTVKTKDRSLSAQYEHTIVVTDNGCEILTLRKDDTIPAIISHDE
Research Area	Others
Source	E.coli
Target Names	map
Protein Names	Recommended name: Methionine aminopeptidase Short name= MAP EC= 3.4.11.18 Alternative name(s): Peptidase M
Expression Region	2-264aa
Notes	Repeated freezing and thawing is not recommended. Store working aliquots at 4°C for up to one week.
Tag Info	N-terminal 6xHis-SUMO-tagged
Mol. Weight	45.2kDa
Protein Length	Full Length of Mature Protein
Image	



(Tris-Glycine gel) Discontinuous SDS-PAGE (reduced) with 5% enrichment gel and 15% separation gel.

Description

The expression of the recombinant Escherichia coli (strain K12) map protein involves the construction of a plasmid encoding the Escherichia coli (strain K12) map protein (2-264aa). This resulting plasmid is introduced into e.coli cells. Positive e.coli cells are selected and cultured for the protein expression. The protein is fused with a N-terminal 6xHis-SUMO tag. After that, cultured cells are lysed. The subsequent step includes purifying the recombinant Escherichia coli (strain K12) map protein through affinity purification from the cell lysate and assessing the purity of the protein via SDS-PAGE. The purity of the recombinant map protein is greater than 90%.

Reconstitution

We recommend that this vial be briefly centrifuged prior to opening to bring the contents to the bottom. Please reconstitute protein in deionized sterile water to a concentration of 0.1-1.0 mg/mL. We recommend to add 5-50% of glycerol (final concentration) and aliquot for long-term storage at -20°C/-80°C. Our default final concentration of glycerol is 50%. Customers could use it as reference.

Shelf Life

The shelf life is related to many factors, storage state, buffer ingredients, storage temperature and the stability of the protein itself. Generally, the shelf life of liquid form is 6 months at -20°C/-80°C. The shelf life of lyophilized form is 12 months at -20°C/-80°C.