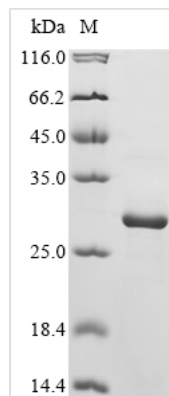




Recombinant *Bacillus thuringiensis* subsp. *kurstaki* Pesticidal crystal protein Cry2Aa (cry2Aa), partial

Product Code	CSB-EP358336BDC
Abbreviation	Recombinant <i>Bacillus thuringiensis</i> subsp. <i>Kurstaki</i> cry2Aa protein, partial
Storage	The shelf life is related to many factors, storage state, buffer ingredients, storage temperature and the stability of the protein itself. Generally, the shelf life of liquid form is 6 months at -20°C/-80°C. The shelf life of lyophilized form is 12 months at -20°C/-80°C.
Uniprot No.	P0A377
Form	Liquid or Lyophilized powder
Storage Buffer	If the delivery form is liquid, the default storage buffer is Tris/PBS-based buffer, 5%-50% glycerol. If the delivery form is lyophilized powder, the buffer before lyophilization is Tris/PBS-based buffer, 6% Trehalose.
Product Type	Recombinant Protein
Immunogen Species	<i>Bacillus thuringiensis</i> subsp. <i>Kurstaki</i>
Purity	Greater than 90% as determined by SDS-PAGE.
Sequence	LMVSSGANLYASGSGPQQTQSFTAQNWPFYSLFQVNSNYILSGISGTRLSITF PNIGGLPGSTTTTHSLNSARVNYSGGVSSGLIGATNLNHNFCSTVLPPLSTPFV RSWLDSGTDREGVATSTNWQTESFQTTLRLCGAFSARGNSNYFPDYFIRNI SGVPLVIRNEDLTRPLHYNQIRNIESPSGTPGGARAYLVSVHNRKN
Research Area	Others
Source	<i>E.coli</i>
Target Names	cry2Aa
Expression Region	267-472aa
Notes	Repeated freezing and thawing is not recommended. Store working aliquots at 4°C for up to one week.
Tag Info	N-terminal 10xHis-tagged and C-terminal Myc-tagged
Mol. Weight	29.7 kDa
Protein Length	Partial
Image	



(Tris-Glycine gel) Discontinuous SDS-PAGE (reduced) with 5% enrichment gel and 15% separation gel.

Description

The process of expressing the recombinant *Bacillus thuringiensis* subsp. *Kurstaki* cry2Aa protein includes transfecting *e.coli* cells with a DNA expression vector carrying the gene for the desired protein (267-472aa). Subsequently, the cells are cultured to induce the expression of the intended protein. The protein is equipped with a N-terminal 10xHis tag and C-terminal Myc tag. The recombinant *Bacillus thuringiensis* subsp. *Kurstaki* cry2Aa protein is then collected and purified from the cell lysate through affinity purification, exhibiting a purity exceeding 90%, as verified by SDS-PAGE.

Reconstitution

We recommend that this vial be briefly centrifuged prior to opening to bring the contents to the bottom. Please reconstitute protein in deionized sterile water to a concentration of 0.1-1.0 mg/mL. We recommend to add 5-50% of glycerol (final concentration) and aliquot for long-term storage at -20°C/-80°C. Our default final concentration of glycerol is 50%. Customers could use it as reference.

Shelf Life

The shelf life is related to many factors, storage state, buffer ingredients, storage temperature and the stability of the protein itself. Generally, the shelf life of liquid form is 6 months at -20°C/-80°C. The shelf life of lyophilized form is 12 months at -20°C/-80°C.