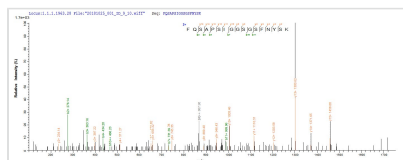




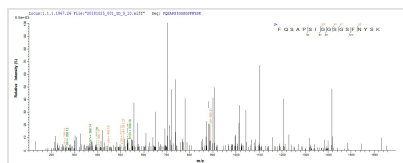
Recombinant Staphylococcus aureus Gamma-hemolysin component A (hlgA)

Product Code	CSB-EP357861SUL
Abbreviation	Recombinant Staphylococcus aureus hlgA protein
Storage	The shelf life is related to many factors, storage state, buffer ingredients, storage temperature and the stability of the protein itself. Generally, the shelf life of liquid form is 6 months at -20°C/-80°C. The shelf life of lyophilized form is 12 months at -20°C/-80°C.
Uniprot No.	P0A073
Storage Buffer	Tris-based buffer, 50% glycerol
Product Type	Recombinant Protein
Immunogen Species	Staphylococcus aureus (strain MW2)
Purity	Greater than 90% as determined by SDS-PAGE.
Sequence	ENKIEDIGQGAEIIRKRTQDITSKRLAITQNIQFDFVKDKKYNKDALVVKMQGFSS RTTYSCLKKYPYIKRMIWPFQYNISLKTCKDSNVDLINYLPKNKIDSADVSKLGY NIGGNFQSAPSIGGSGSFNYSKTISYNQKNYVTEVESQNSKGVKWKGVKANSF VTPNGQVSAYDQYLFAQDPTGPAARDYFVPDNQLPLIQSGFNPSFITTLSHE RGKGDKSEFEITYGRNMDATYAYVTRHRLAVDRKHDAFKNRNVTVKYEVNWK THEVKIKSITPK
Research Area	Metabolism
Source	E.coli
Target Names	hlgA
Protein Names	Recommended name: Gamma-hemolysin component A Alternative name(s): H-gamma-2 H-gamma-II
Expression Region	30-309aa
Notes	Repeated freezing and thawing is not recommended. Store working aliquots at 4°C for up to one week.
Tag Info	N-terminal 10xHis-tagged and C-terminal Myc-tagged
Mol. Weight	39.4 kDa
Protein Length	Full Length of Mature Protein

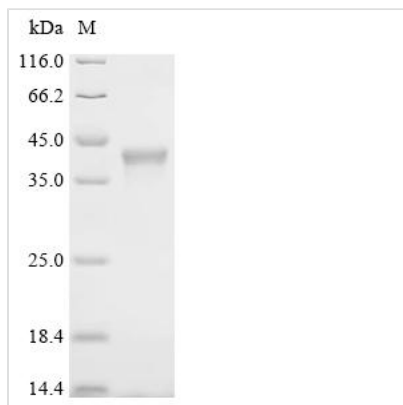
Image



Based on the SEQUEST from database of E.coli host and target protein, the LC-MS/MS Analysis result of CSB-EP357861SUL could indicate that this peptide derived from E.coli-expressed Staphylococcus aureus (strain MW2) hlgA.



Based on the SEQUEST from database of E.coli host and target protein, the LC-MS/MS Analysis result of CSB-EP357861SUL could indicate that this peptide derived from E.coli-expressed Staphylococcus aureus (strain MW2) hlgA.



(Tris-Glycine gel) Discontinuous SDS-PAGE (reduced) with 5% enrichment gel and 15% separation gel.

Reconstitution

We recommend that this vial be briefly centrifuged prior to opening to bring the contents to the bottom. Please reconstitute protein in deionized sterile water to a concentration of 0.1-1.0 mg/mL. We recommend to add 5-50% of glycerol (final concentration) and aliquot for long-term storage at -20°C/-80°C. Our default final concentration of glycerol is 50%. Customers could use it as reference.

Shelf Life

The shelf life is related to many factors, storage state, buffer ingredients, storage temperature and the stability of the protein itself. Generally, the shelf life of liquid form is 6 months at -20°C/-80°C. The shelf life of lyophilized form is 12 months at -20°C/-80°C.