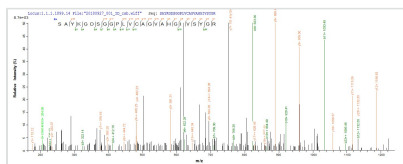




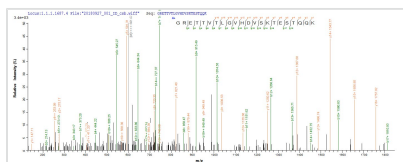
Recombinant Rat Mast cell protease 1 (Mcpt1)

Product Code	CSB-EP357723RA
Abbreviation	Recombinant Rat Mcpt1 protein
Storage	The shelf life is related to many factors, storage state, buffer ingredients, storage temperature and the stability of the protein itself. Generally, the shelf life of liquid form is 6 months at -20°C/-80°C. The shelf life of lyophilized form is 12 months at -20°C/-80°C.
Uniprot No.	P09650
Product Type	Recombinant Protein
Immunogen Species	Rattus norvegicus (Rat)
Purity	Greater than 85% as determined by SDS-PAGE.
Sequence	IIGGVESRPHSRPYMAHLEITTERGYKATCGGFLVTRQFVMTAAHCKGRETTV TLGVHDSKTESTQQKIKVEKQIVHPNYPNLFYSNLHDIMLLKLQKKAKVTPAVDVI PLPQPSDFLKPQKMCRAAGWGQTGVTKPTSNTLREVKQRIMDKACKNYFHY NPNFQVCVGSPPRKIRSAYKGDSSGGLVCAGVAHGIVSYGRGDAKPPAVFTRIS PYVPWINKVIKGDLTSLSLHESESPS
Research Area	Cancer
Source	E.coli
Target Names	Mcpt1
Protein Names	Recommended name: Mast cell protease 1 Short name= rMCP-1 EC= 3.4.21.39 Alternative name(s): Chymase Chymotrysin-like protease Short name= CLIP protein Mast cell protease I Short name= rMCP-I
Expression Region	21-260aa
Notes	Repeated freezing and thawing is not recommended. Store working aliquots at 4°C for up to one week.
Tag Info	N-terminal Myc-tagged
Mol. Weight	28.6 kDa
Protein Length	Full Length of Mature Protein

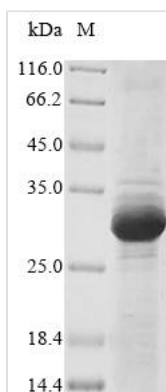
Image



Based on the SEQUEST from database of E.coli host and target protein, the LC-MS/MS Analysis result of CSB-EP357723RA could indicate that this peptide derived from E.coli-expressed *Rattus norvegicus* (Rat) Mcpt1.



Based on the SEQUEST from database of E.coli host and target protein, the LC-MS/MS Analysis result of CSB-EP357723RA could indicate that this peptide derived from E.coli-expressed *Rattus norvegicus* (Rat) Mcpt1.



(Tris-Glycine gel) Discontinuous SDS-PAGE (reduced) with 5% enrichment gel and 15% separation gel.

Reconstitution

We recommend that this vial be briefly centrifuged prior to opening to bring the contents to the bottom. Please reconstitute protein in deionized sterile water to a concentration of 0.1-1.0 mg/mL. We recommend to add 5-50% of glycerol (final concentration) and aliquot for long-term storage at -20°C/-80°C. Our default final concentration of glycerol is 50%. Customers could use it as reference.

Shelf Life

The shelf life is related to many factors, storage state, buffer ingredients, storage temperature and the stability of the protein itself. Generally, the shelf life of liquid form is 6 months at -20°C/-80°C. The shelf life of lyophilized form is 12 months at -20°C/-80°C.