

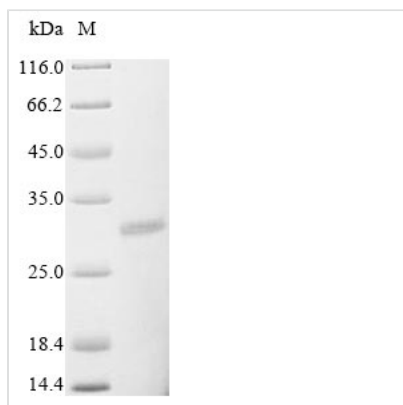


Recombinant Rotavirus A Non-structural glycoprotein 4, partial

Product Code	CSB-EP357389RIV
Relevance	Involved in virus morphogenesis. Functions as a receptor for the immature double-layered inner capsid particle (ICP) which transiently buds into the lumen of the rough endoplasmic reticulum during viral maturation. Enterotoxin that causes a phospholipase C-dependent elevation of the intracellular calcium concentration in host intestinal mucosa cells. Increased concentration of intracellular calcium disrupts the cytoskeleton and the tight junctions, raising the paracellular permeability. Potentiates chloride ion secretion through a calcium ion-dependent signaling pathway, inducing age-dependent diarrhea. To perform this enterotoxigenic role in vivo, NSP4 is probably released from infected enterocytes in a soluble form capable of diffusing within the intestinal lumen and interacting with the plasma membrane receptors on neighboring epithelial cells. Possible receptors for NSP4 are alpha-1/beta-1 and alpha-2/beta-1 integrin heterodimers
Abbreviation	Recombinant Rotavirus A Non-structural glycoprotein 4 protein, partial
Storage	The shelf life is related to many factors, storage state, buffer ingredients, storage temperature and the stability of the protein itself. Generally, the shelf life of liquid form is 6 months at -20°C/-80°C. The shelf life of lyophilized form is 12 months at -20°C/-80°C.
Uniprot No.	P08434
Product Type	Recombinant Protein
Immunogen Species	Rotavirus A (strain RVA/Cow/United States/NCDV-Lincoln/1969/G6P6[1]) (RV-A) (Rotavirus A (strain Nebraska calf diarrhea virus))
Purity	Greater than 85% as determined by SDS-PAGE.
Sequence	TLHKASIPTMKIALKTSKCSYKVVKYCIVTIFNTLLKLAGYKEQITTKDEIEKQMD RVVKEMRRQLEMIDKLTREIEQVELLKRIHDKLMIRAVDEIDMTKEINQKNVRT LEEWENGKNPYEPKEVTAAM
Research Area	Others
Source	E.coli
Protein Names	NCVP5 NS28
Expression Region	45-175aa
Notes	Repeated freezing and thawing is not recommended. Store working aliquots at 4°C for up to one week.
Tag Info	N-terminal 6xHis-tagged and C-terminal Myc-tagged
Mol. Weight	20.9 kDa
Protein Length	Partial



Image



(Tris-Glycine gel) Discontinuous SDS-PAGE (reduced) with 5% enrichment gel and 15% separation gel.

Reconstitution

We recommend that this vial be briefly centrifuged prior to opening to bring the contents to the bottom. Please reconstitute protein in deionized sterile water to a concentration of 0.1-1.0 mg/mL. We recommend to add 5-50% of glycerol (final concentration) and aliquot for long-term storage at -20°C/-80°C. Our default final concentration of glycerol is 50%. Customers could use it as reference.

Shelf Life

The shelf life is related to many factors, storage state, buffer ingredients, storage temperature and the stability of the protein itself. Generally, the shelf life of liquid form is 6 months at -20°C/-80°C. The shelf life of lyophilized form is 12 months at -20°C/-80°C.