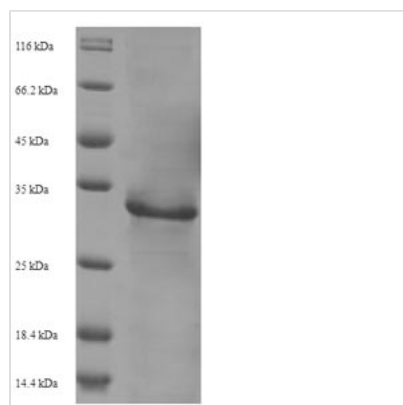


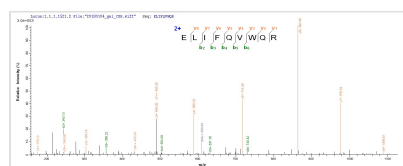


# Recombinant Human immunodeficiency virus type 2 subtype A Protein Vpx (vpx)

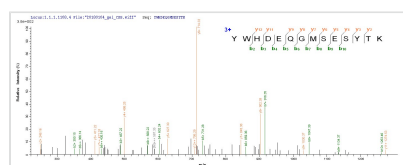
<b>Product Code</b>	CSB-EP356976HLZ
<b>Relevance</b>	Plays a role in nuclear translocation of the viral pre-integration complex (PIC), thus is required for the virus to infect non-dividing cells. Targets specific host proteins for degradation by the 26S proteasome. Acts by associating with the cellular CUL4A-DDB1 E3 ligase complex through direct interaction with host VPRPB/DCAF-1. This change in the E3 ligase substrate specificity results in the degradation of host SAMHD1. In turn, SAMHD1 depletion allows viral replication in host myeloid cells by preventing SAMHD1-mediated hydrolysis of intracellular dNTPs necessary for reverse transcription (By similarity).
<b>Abbreviation</b>	Recombinant Human immunodeficiency virus type 2 subtype A vpx protein
<b>Storage</b>	The shelf life is related to many factors, storage state, buffer ingredients, storage temperature and the stability of the protein itself. Generally, the shelf life of liquid form is 6 months at -20°C/-80°C. The shelf life of lyophilized form is 12 months at -20°C/-80°C.
<b>Uniprot No.</b>	P06939
<b>Alias</b>	Viral protein X X ORF protein
<b>Product Type</b>	Recombinant Protein
<b>Immunogen Species</b>	Human immunodeficiency virus type 2 subtype A (isolate ROD) (HIV-2)
<b>Purity</b>	Greater than 90% as determined by SDS-PAGE.
<b>Sequence</b>	MTDPRETVPPGNSGEETIGEAFALNRTVEAINREAVNHLPRELIFQVWQRS WRYWHDEQGMSESYTKYRYLCIIQKAVYMHVRKGCTCLGRGHGPGGWRPG PPPPPPGLV
<b>Research Area</b>	Others
<b>Source</b>	E.coli
<b>Target Names</b>	vpx
<b>Expression Region</b>	1-112aa
<b>Notes</b>	Repeated freezing and thawing is not recommended. Store working aliquots at 4°C for up to one week.
<b>Tag Info</b>	N-terminal 6xHis-SUMO-tagged
<b>Mol. Weight</b>	28.8kDa
<b>Protein Length</b>	Full Length
<b>Image</b>	



(Tris-Glycine gel) Discontinuous SDS-PAGE (reduced) with 5% enrichment gel and 15% separation gel.



Based on the SEQUEST from database of E.coli host and target protein, the LC-MS/MS Analysis result of CSB-EP356976HLZ could indicate that this peptide derived from E.coli-expressed Human immunodeficiency virus type 2 subtype A (isolate ROD) (HIV-2) vpx.



Based on the SEQUEST from database of E.coli host and target protein, the LC-MS/MS Analysis result of CSB-EP356976HLZ could indicate that this peptide derived from E.coli-expressed Human immunodeficiency virus type 2 subtype A (isolate ROD) (HIV-2) vpx.

## Reconstitution

We recommend that this vial be briefly centrifuged prior to opening to bring the contents to the bottom. Please reconstitute protein in deionized sterile water to a concentration of 0.1-1.0 mg/mL. We recommend to add 5-50% of glycerol (final concentration) and aliquot for long-term storage at -20°C/-80°C. Our default final concentration of glycerol is 50%. Customers could use it as reference.

## Shelf Life

The shelf life is related to many factors, storage state, buffer ingredients, storage temperature and the stability of the protein itself. Generally, the shelf life of liquid form is 6 months at -20°C/-80°C. The shelf life of lyophilized form is 12 months at -20°C/-80°C.