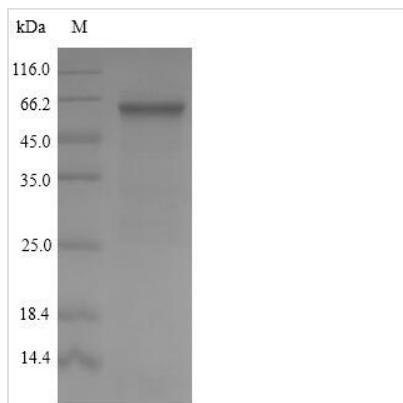




# Recombinant Streptococcus pyogenes serotype M5 M protein, serotype 5 (emm5)

<b>Product Code</b>	CSB-EP355917SMY
<b>Relevance</b>	This protein is one of the different antigenic serotypes of protein M. Protein M is closely associated with virulence of the bacterium and can render the organism resistant to phagocytosis.
<b>Abbreviation</b>	Recombinant Streptococcus pyogenes serotype M5 emm5 protein
<b>Storage</b>	The shelf life is related to many factors, storage state, buffer ingredients, storage temperature and the stability of the protein itself. Generally, the shelf life of liquid form is 6 months at -20°C/-80°C. The shelf life of lyophilized form is 12 months at -20°C/-80°C.
<b>Uniprot No.</b>	P02977
<b>Product Type</b>	Recombinant Protein
<b>Immunogen Species</b>	Streptococcus pyogenes serotype M5
<b>Purity</b>	Greater than 90% as determined by SDS-PAGE.
<b>Sequence</b>	AVTRGTINDPQRAKEALDKYELENHDLKTKNEGLKTENEGLKTENEGLKTENE GLKTEKKEHEAENDKLKQQRDTLSTQKETLEREVQNTQYNNETLKIKNGDLTK ELNKTRQELANKQQESKENEKALNELLEKTVKD KIAKEQENKETIGTLKKILDET VKDKIAKEQENKETIGTLKKILDET VKDKLAKEQKSKQNIGALKQELAKKDEANK ISDASRKGLRRDLASREAKKQLEAEHQKLEEQNKISEASRKGLRRDLASRE AKKQLEAEQQKLEEQNKISEASRKGLRRDLASREAKKQVEKALEEANSKLAA LEKLNKELEESKKLTEKEKAELQAKLEAEAKALKEQLAKQAEELAKLRAGKASD SQTPDTKPGNKAVPGKGQAPQAGTKPNQNKAPMKETKRQLPST
<b>Research Area</b>	Others
<b>Source</b>	E.coli
<b>Target Names</b>	emm5
<b>Protein Names</b>	Recommended name: M protein, serotype 5
<b>Expression Region</b>	43-461aa
<b>Notes</b>	Repeated freezing and thawing is not recommended. Store working aliquots at 4°C for up to one week.
<b>Tag Info</b>	N-terminal 10xHis-tagged and C-terminal Myc-tagged
<b>Mol. Weight</b>	52.5kDa
<b>Protein Length</b>	Full Length of Mature Protein
<b>Image</b>	



(Tris-Glycine gel) Discontinuous SDS-PAGE (reduced) with 5% enrichment gel and 15% separation gel.

### Reconstitution

We recommend that this vial be briefly centrifuged prior to opening to bring the contents to the bottom. Please reconstitute protein in deionized sterile water to a concentration of 0.1-1.0 mg/mL. We recommend to add 5-50% of glycerol (final concentration) and aliquot for long-term storage at -20°C/-80°C. Our default final concentration of glycerol is 50%. Customers could use it as reference.

### Shelf Life

The shelf life is related to many factors, storage state, buffer ingredients, storage temperature and the stability of the protein itself. Generally, the shelf life of liquid form is 6 months at -20°C/-80°C. The shelf life of lyophilized form is 12 months at -20°C/-80°C.