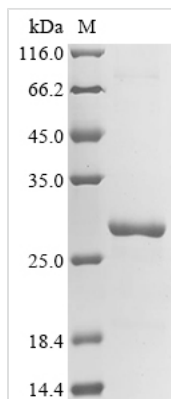




Recombinant Escherichia coli O6:H1 Phosphodiesterase yfcE (yfcE)

Product Code	CSB-EP355466EGX
Abbreviation	Recombinant E.coli O6:H1 yfcE protein
Storage	The shelf life is related to many factors, storage state, buffer ingredients, storage temperature and the stability of the protein itself. Generally, the shelf life of liquid form is 6 months at -20°C/-80°C. The shelf life of lyophilized form is 12 months at -20°C/-80°C.
Uniprot No.	P67096
Form	Liquid or Lyophilized powder
Storage Buffer	If the delivery form is liquid, the default storage buffer is Tris/PBS-based buffer, 5%-50% glycerol. If the delivery form is lyophilized powder, the buffer before lyophilization is Tris/PBS-based buffer, 6% Trehalose.
Product Type	Recombinant Protein
Immunogen Species	Escherichia coli O6:H1 (strain CFT073 / ATCC 700928 / UPEC)
Purity	Greater than 90% as determined by SDS-PAGE.
Sequence	MMKLMFASDIHGSLPATERVLELFAQSGAQWLVLGDVLNHGPRNALPEGYAP AKVAERLNEVAHKVIAVRGNCDSEVDQMLLHFPITAPWQQVLLEKQRLFLTHG HLFGPENLPALNQNDVLVYGHTHLPVAEQRGEIFHFNPGSVSIPKGGNPASYG MLDNDVLSVIALNDQSIIAQVAINP
Research Area	Others
Source	E.coli
Target Names	yfcE
Expression Region	1-184aa
Notes	Repeated freezing and thawing is not recommended. Store working aliquots at 4°C for up to one week.
Tag Info	N-terminal 10xHis-tagged and C-terminal Myc-tagged
Mol. Weight	27.6 kDa
Protein Length	Full Length
Image	



(Tris-Glycine gel) Discontinuous SDS-PAGE (reduced) with 5% enrichment gel and 15% separation gel.

Description

The recombinant *Escherichia coli* O6:H1 phosphodiesterase yfcE is expressed in *E. coli* using an expression construct that encodes the full-length yfcE protein comprising amino acids 1 to 184. The recombinant yfcE protein is tagged with a 10xHis-tag at the N-terminus and a Myc-tag at the C-terminus, facilitating purification and detection. The purity of the recombinant yfcE protein exceeds 90%, as determined by SDS-PAGE analysis. On the gel, this recombinant yfcE protein migrates as a band with an apparent molecular weight of approximately 28 kDa.

As a phosphodiesterase enzyme, yfcE specifically cleaves the phosphodiester bonds between the phosphate group and the adjacent nucleotides in DNA or RNA molecules. yfcE is also associated with nucleic acid metabolism, turnover, and potentially DNA repair pathways.

Reconstitution

We recommend that this vial be briefly centrifuged prior to opening to bring the contents to the bottom. Please reconstitute protein in deionized sterile water to a concentration of 0.1-1.0 mg/mL. We recommend to add 5-50% of glycerol (final concentration) and aliquot for long-term storage at -20°C/-80°C. Our default final concentration of glycerol is 50%. Customers could use it as reference.

Shelf Life

The shelf life is related to many factors, storage state, buffer ingredients, storage temperature and the stability of the protein itself. Generally, the shelf life of liquid form is 6 months at -20°C/-80°C. The shelf life of lyophilized form is 12 months at -20°C/-80°C.