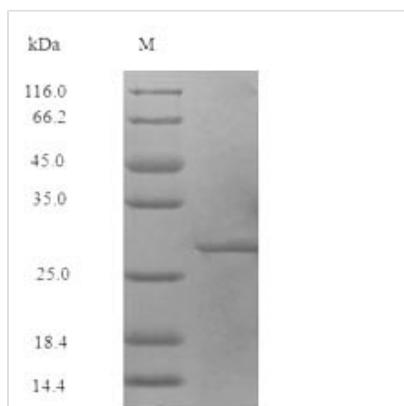




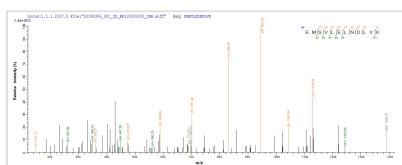
Recombinant Staphylococcus aureus 50S ribosomal protein L7/L12 (rpL)

Product Code	CSB-EP354049SKX
Relevance	Forms part of the ribosomal stalk which helps the ribosome interact with GTP-bound translation factors. Is thus essential for accurate translation.
Abbreviation	Recombinant Staphylococcus aureus rpL protein
Storage	The shelf life is related to many factors, storage state, buffer ingredients, storage temperature and the stability of the protein itself. Generally, the shelf life of liquid form is 6 months at -20°C/-80°C. The shelf life of lyophilized form is 12 months at -20°C/-80°C.
Uniprot No.	P66061
Product Type	Recombinant Protein
Immunogen Species	Staphylococcus aureus (strain Mu50 / ATCC 700699)
Purity	Greater than 90% as determined by SDS-PAGE.
Sequence	MANHEQIIIEAIKEMSVLELNDLVKAIEEEFGVTAAAPVAVAGAAGGADAAAEKT EFDVELTSAGSSKIKVVKAVKEATGLGLKDAKELVDGAPKVIKEALPKEEAEKL KEQLEEVGATVELK
Research Area	Others
Source	E.coli
Target Names	rpL
Expression Region	1-122aa
Notes	Repeated freezing and thawing is not recommended. Store working aliquots at 4°C for up to one week.
Tag Info	N-terminal 6xHis-SUMO-tagged
Mol. Weight	28.7kDa
Protein Length	Full Length

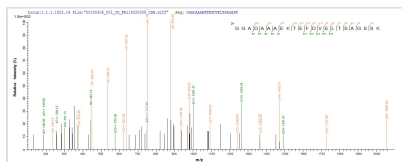
Image



(Tris-Glycine gel) Discontinuous SDS-PAGE (reduced) with 5% enrichment gel and 15% separation gel.



Based on the SEQUEST from database of E.coli host and target protein, the LC-MS/MS Analysis result of CSB-EP354049SKX could indicate that this peptide derived from E.coli-expressed Staphylococcus aureus (strain Mu50 / ATCC 700699) rplL.



Based on the SEQUEST from database of E.coli host and target protein, the LC-MS/MS Analysis result of CSB-EP354049SKX could indicate that this peptide derived from E.coli-expressed Staphylococcus aureus (strain Mu50 / ATCC 700699) rplL.

Reconstitution

We recommend that this vial be briefly centrifuged prior to opening to bring the contents to the bottom. Please reconstitute protein in deionized sterile water to a concentration of 0.1-1.0 mg/mL. We recommend to add 5-50% of glycerol (final concentration) and aliquot for long-term storage at -20°C/-80°C. Our default final concentration of glycerol is 50%. Customers could use it as reference.

Shelf Life

The shelf life is related to many factors, storage state, buffer ingredients, storage temperature and the stability of the protein itself. Generally, the shelf life of liquid form is 6 months at -20°C/-80°C. The shelf life of lyophilized form is 12 months at -20°C/-80°C.