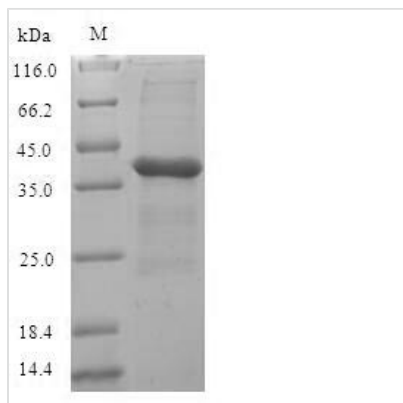




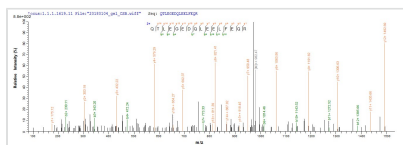
Recombinant Staphylococcus aureus Adapter protein MecA (mecA)

Product Code	CSB-EP350910SUL
Relevance	Enables the recognition and targeting of unfolded and aggregated proteins to the ClpC protease or to other proteins involved in proteolysis.
Abbreviation	Recombinant Staphylococcus aureus mecA protein
Storage	The shelf life is related to many factors, storage state, buffer ingredients, storage temperature and the stability of the protein itself. Generally, the shelf life of liquid form is 6 months at -20°C/-80°C. The shelf life of lyophilized form is 12 months at -20°C/-80°C.
Uniprot No.	P60186
Product Type	Recombinant Protein
Immunogen Species	Staphylococcus aureus (strain MW2)
Purity	Greater than 90% as determined by SDS-PAGE.
Sequence	MRIERVDDTTVKLFITYSDIEARGFSREDLWTNRKRGEFFWSMMDEINEED FVVEGPLWIQVHAFEKGVETISKSKNEDMMNMSDDDATDQFDEQVQELLAQ TLEGEDQLEELFEQRTKEKEAQGSKRQKSSARKNTRTIIVKFNDLEDVINYAYH SNPITTEFEDLLYMVDGTYYYAVHFDSDQEVINDSYSQLLEFAYPTDRTEVY LNDYAKIIMSHNVTAQVRRYFPETTE
Research Area	Microbiology
Source	E.coli
Target Names	mecA
Expression Region	1-239aa
Notes	Repeated freezing and thawing is not recommended. Store working aliquots at 4°C for up to one week.
Tag Info	N-terminal 6xHis-SUMO-tagged
Mol. Weight	44.3kDa
Protein Length	Full Length

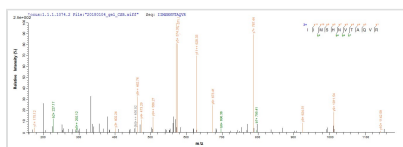
Image



(Tris-Glycine gel) Discontinuous SDS-PAGE (reduced) with 5% enrichment gel and 15% separation gel.



Based on the SEQUEST from database of E.coli host and target protein, the LC-MS/MS Analysis result of CSB-EP350910SUL could indicate that this peptide derived from E.coli-expressed Staphylococcus aureus (strain MW2) mecA.



Based on the SEQUEST from database of E.coli host and target protein, the LC-MS/MS Analysis result of CSB-EP350910SUL could indicate that this peptide derived from E.coli-expressed Staphylococcus aureus (strain MW2) mecA.

Reconstitution

We recommend that this vial be briefly centrifuged prior to opening to bring the contents to the bottom. Please reconstitute protein in deionized sterile water to a concentration of 0.1-1.0 mg/mL. We recommend to add 5-50% of glycerol (final concentration) and aliquot for long-term storage at -20°C/-80°C. Our default final concentration of glycerol is 50%. Customers could use it as reference.

Shelf Life

The shelf life is related to many factors, storage state, buffer ingredients, storage temperature and the stability of the protein itself.

Generally, the shelf life of liquid form is 6 months at -20°C/-80°C. The shelf life of lyophilized form is 12 months at -20°C/-80°C.