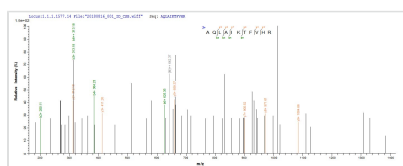




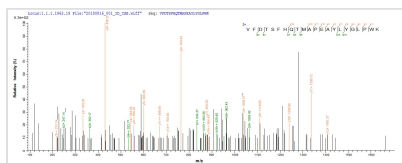
Recombinant Escherichia coli O6:H1 Propionate kinase (tdcD)

Product Code	CSB-EP349383EGX
Abbreviation	Recombinant E.coli O6:H1 tdcD protein
Storage	The shelf life is related to many factors, storage state, buffer ingredients, storage temperature and the stability of the protein itself. Generally, the shelf life of liquid form is 6 months at -20°C/-80°C. The shelf life of lyophilized form is 12 months at -20°C/-80°C.
Uniprot No.	P59244
Product Type	Recombinant Protein
Immunogen Species	Escherichia coli O6:H1 (strain CFT073 / ATCC 700928 / UPEC)
Purity	Greater than 90% as determined by SDS-PAGE.
Sequence	MNEFPVVLVINGGSSSIKFSVLNASDCEVLMSGIADGINSENAFLSVNGGEPAP LAHHSYEGALKAIAFELEKRNLDNVALIGHRIAHHGGSIFTESAITDEVIDNIRRV SPLAPLHNYANLSGIESAQQLFPGVTQVAVFDTSFHQTMAPEAYLYGLPWKYY EELGVRRYGFHGTSHRYVSQRAHSLNLAEDDSGLVVAHLGNGASICAVRNG QSVDTSMGMTPLEGLMMGTRSGDVDFGAMSWVASQTNQSLGDLERVVNKE SGLLGISGLSSDLRVLEKAWHEGHERAQLAIKTFVHRIARHIAGHAASLHRLDGI IFTGGIGENSSLIRRLVMEHLAVLGVEIDTEMNNRSNSFGERIVSSENARVICA PTNEEKMIALDAIHLGKVNAPAEFA
Research Area	Others
Source	E.coli
Target Names	tdcD
Protein Names	Recommended name: Propionate kinase EC= 2.7.2.15
Expression Region	1-402aa
Notes	Repeated freezing and thawing is not recommended. Store working aliquots at 4°C for up to one week.
Tag Info	N-terminal 10xHis-tagged and C-terminal Myc-tagged
Mol. Weight	50.4 kDa
Protein Length	Full Length

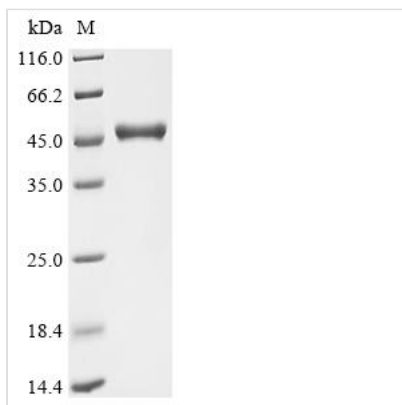
Image



Based on the SEQUEST from database of E.coli host and target protein, the LC-MS/MS Analysis result of CSB-EP349383EGX could indicate that this peptide derived from E.coli-expressed Escherichia coli O6:H1 (strain CFT073 / ATCC 700928 / UPEC) tdcD.



Based on the SEQUEST from database of E.coli host and target protein, the LC-MS/MS Analysis result of CSB-EP349383EGX could indicate that this peptide derived from E.coli-expressed Escherichia coli O6:H1 (strain CFT073 / ATCC 700928 / UPEC) tdcD.



(Tris-Glycine gel) Discontinuous SDS-PAGE (reduced) with 5% enrichment gel and 15% separation gel.

Reconstitution

We recommend that this vial be briefly centrifuged prior to opening to bring the contents to the bottom. Please reconstitute protein in deionized sterile water to a concentration of 0.1-1.0 mg/mL. We recommend to add 5-50% of glycerol (final concentration) and aliquot for long-term storage at -20°C/-80°C. Our default final concentration of glycerol is 50%. Customers could use it as reference.

Shelf Life

The shelf life is related to many factors, storage state, buffer ingredients, storage temperature and the stability of the protein itself. Generally, the shelf life of liquid form is 6 months at -20°C/-80°C. The shelf life of lyophilized form is 12 months at -20°C/-80°C.